



Adelaide Avenue, SE4

£475,000

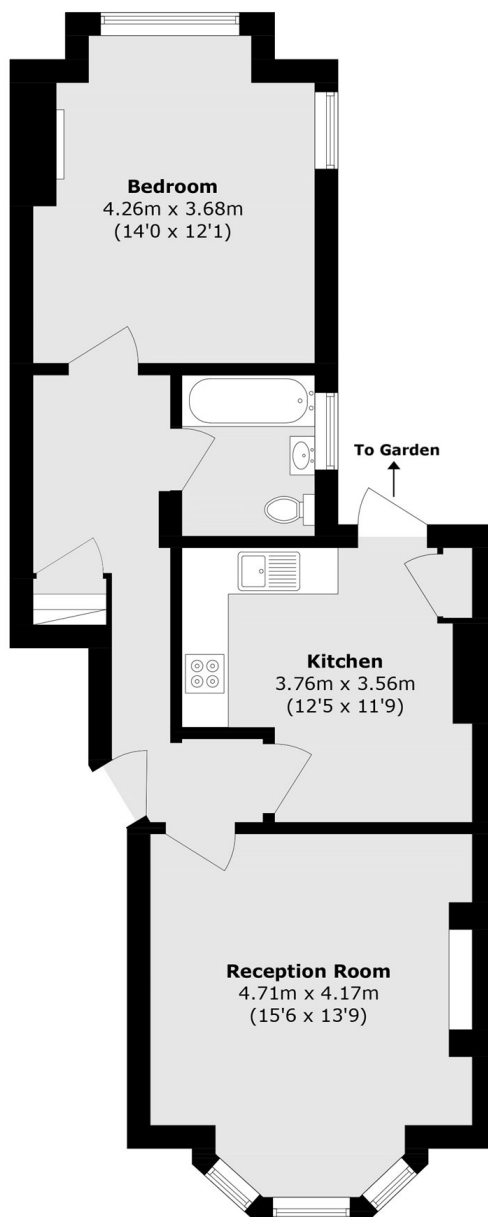
A spacious period conversion occupying the entire ground floor of an elegant Victorian building with direct access to a private garden, ideally situated for Hilly Fields, Brockley and Ladywell Village.

Adelaide Avenue is a desirable road moments from Brockley and Ladywell Village with its vibrant range of local shops, cafés and restaurants. The fantastic transport links from both Brockley and Ladywell stations provide frequent service into London and the City.

Features

- Period Conversion
- Large Reception Room
- Private Garden
- Share Of Freehold
- Close To Transport
- Chain Free

Adelaide Avenue, London, SE4



Total area (approx.): 59.1 sq. m (636.1 sq. ft)