



Handen Road, SE12

£625,000

This spacious and well-presented ground floor conversion flat offers an ideal living space, located in a sought-after area on Handen Road. Boasting two generously sized double bedrooms, this flat is perfect for professionals, couples, or small families. The property features a huge lounge that not only provides ample space for relaxation and entertaining but also benefits from direct access to the private rear garden, creating a seamless indoor-outdoor living experience.

Handen Road is located in a charming conservation area in the popular Lee Green neighbourhood, offering a peaceful residential atmosphere while still being close to

Features

- Beautiful Conversion Flat
- Two Double Bedrooms
- Huge Lounge
- Modern Kitchen & Bathroom
- Private Rear Garden
- Well Presented Throughout



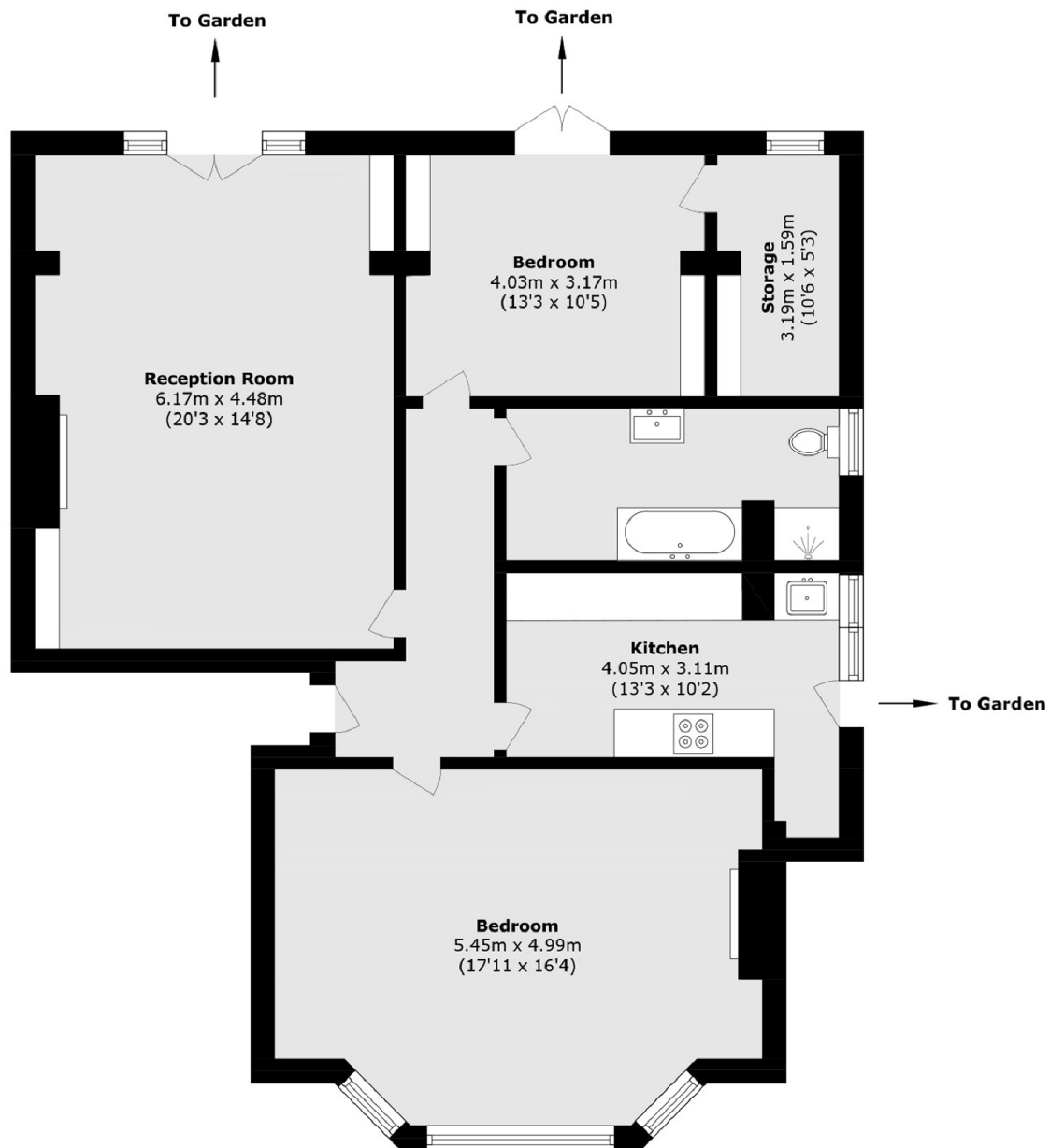
Handen Road, SE12

The modern kitchen is well-equipped with contemporary fittings, making meal preparation a joy. Additionally, the flat includes a family bathroom, offering a clean and functional space for all your needs.

Outside, the private rear garden offers a peaceful retreat, ideal for enjoying the outdoors or hosting gatherings. With a perfect blend of modern comforts and convenient features, this ground-floor flat is not to be missed.



Handen Road, London, SE12



Total area (approx.): 97.2 sq. m (1046.2 sq. ft)

Dexters

Lee
430-432 Lee High Road
Lee
London
Sales
020 8815 2210

Energy Rating: C. We aim to make our particulars both accurate and reliable. However they are not guaranteed; nor do they form part of an offer or contract. If you require clarification on any points then please contact us, especially if you're traveling some distance to view. Please note that appliances and heating systems have not been tested and therefore no warranties can be given as to their good working order.

 **RICS** | Regulated
Estate Agent
and Letting Agent

[dexters.co.uk](https://www.dexters.co.uk)