



Le May Avenue, SE12

£290,000

Nestled on the sought-after Le May Avenue, this 2-bedroom ground floor maisonette offers a fantastic opportunity for first-time buyers or investors alike.

In need of modernisation, the property presents a blank canvas to create a stylish and comfortable living space tailored to your taste. Features include a private courtyard garden, perfect for relaxing or entertaining, and off-road parking for added convenience.

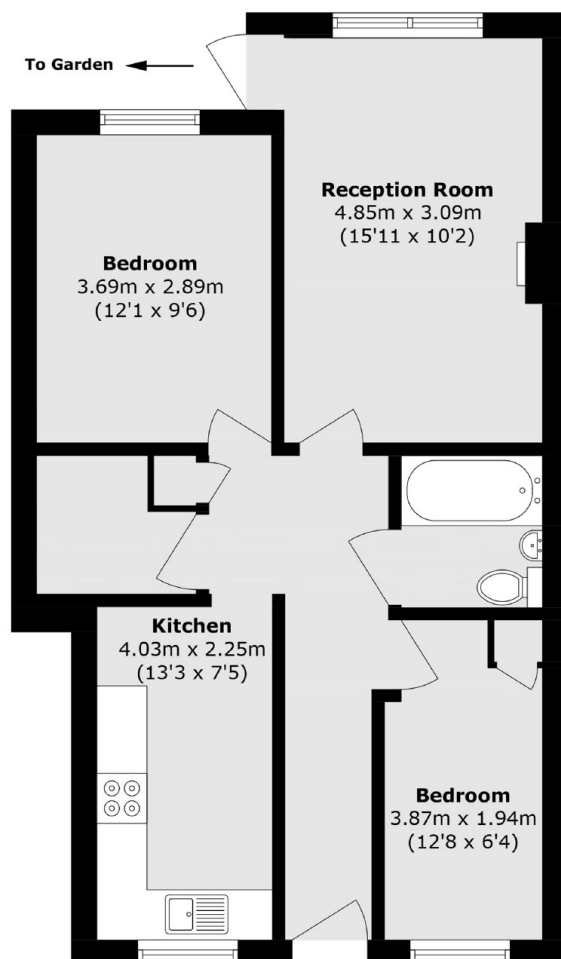
Offered with no upward chain, this home is ready for a smooth and swift purchase. With excellent potential and a great location, this is one not to miss!

Le May Avenue enjoys a pleasant, residential setting in the well-connected area of Grove Park. Just a short walk away, Grove Park Station offers excellent transport links into central London, with direct routes to Charing Cross, London Bridge, Cannon Street, and Victoria. The property also benefits from close proximity to Burnt Ash Hill, making Lee Station easily accessible as another convenient travel option.

Features

- No Upward Chain
- Two Bedrooms
- Ground Floor Maisonette
- Private Courtyard
- Off Road Parking
- Ideal Investment/First Home

Le May Avenue, London, SE12



Total area (approx.): 59.2 sq. m (637.2 sq. ft.)

Dexters

Lee
430-432 Lee High Road
Lee
London
Sales
020 8815 2210

Energy Rating: D. We aim to make our particulars both accurate and reliable. However they are not guaranteed; nor do they form part of an offer or contract. If you require clarification on any points then please contact us, especially if you're traveling some distance to view. Please note that appliances and heating systems have not been tested and therefore no warranties can be given as to their good working order.

 **RICS** | Regulated
Estate Agent
and Letting Agent

[dexters.co.uk](https://www.dexters.co.uk)