



Burnt Ash Road, SE12

£365,000

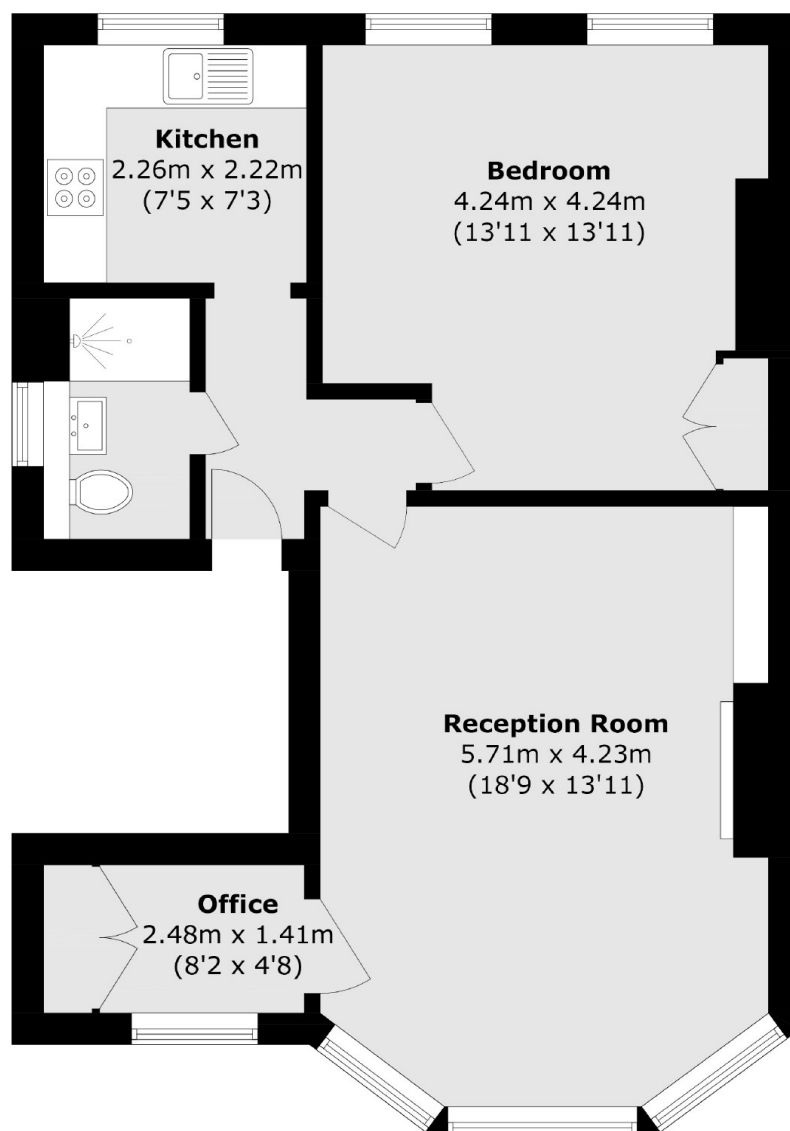
Located on the first floor of an impressive detached Victorian building, this spacious one-bedroom flat offers over 600 sq ft of well-arranged accommodation. The property features a bright and generous living room with a large sash bay window, a fitted kitchen, a double bedroom, a separate study or cot room, and a contemporary shower room. Additional benefits include access to a communal rear garden, off-street parking to the front, a share of the Freehold, and no onward chain.

Just a short walk from the station with no train noise, the property offers fast, direct links to central London. Lewisham Station and the DLR are also easily accessible. Surrounded by green spaces like Manor House Park and Mountsfield Park, it's perfect for outdoor lovers. The area also boasts a great selection of cafés, pubs, and local spots such as The Lord Northbrook, Luciano, Bijou Café, and the Pottery Studio, adding to its vibrant community feel.

Features

- No Upward Chain
- One Bedroom
- Study/Cot Room
- Parking
- Victorian Conversion
- Great Location

Burnt Ash Road,
London, SE12



Total area (approx.): 58.0 sq. m (624.3 sq. ft)

Dexters

Lee
430-432 Lee High Road
Lee
London
Sales
020 8815 2210

Energy Rating: E. We aim to make our particulars both accurate and reliable. However they are not guaranteed; nor do they form part of an offer or contract. If you require clarification on any points then please contact us, especially if you're traveling some distance to view. Please note that appliances and heating systems have not been tested and therefore no warranties can be given as to their good working order.

 **RICS** | Regulated
Estate Agent
and Letting Agent

[dexters.co.uk](https://www.dexters.co.uk)