



## Pegler Square, SE3

### £760,000

Birch House offers three communal spaces, a mezzanine-level meeting room with kitchen facilities (bookable by email), a terrace on the fifteenth floor facing the train station and plaza to the east, and a sky lounge on the 13th floor with both indoor and outdoor areas, perfect for gatherings, work, or relaxation while taking in panoramic views of London's skyline.

The apartment has three bedrooms and two bathrooms. Two of the bedrooms feature spacious built-in wardrobes. The entrance hallway is wide and welcoming, with clear separation between the living and bedroom areas, and the corridor is bright and airy.

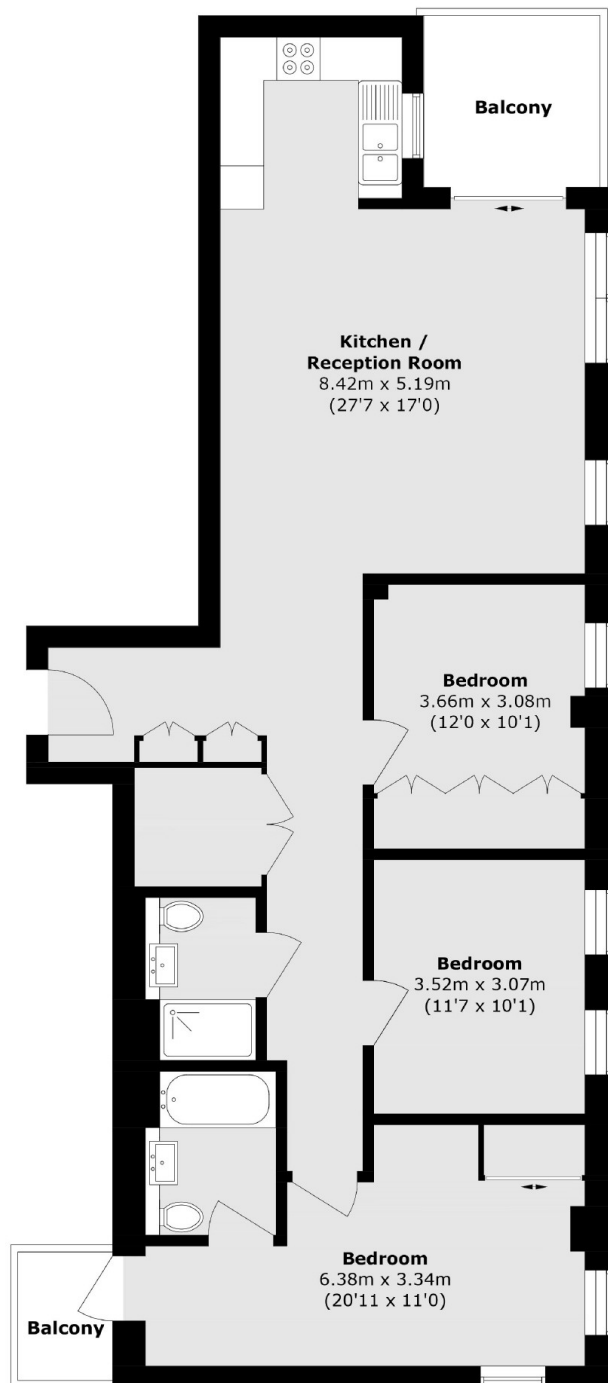
Right downstairs, the community centre has everything you need, NHS services, a pharmacy, dental clinic, four supermarkets, plus restaurants, bars, and cafés.

The train and bus stations are less than 100 meters away, with trains taking just 20 minutes to reach London Bridge, Charing Cross, and Victoria. Across the street is a park, and there are plenty of green spaces, playing fields, and clubs all within walking distance.

### Features

- Three Beds
- Two Bathrooms
- Three Communal Spaces
- Panoramic Views
- Local Amenities
- Close To Transport Links

# Pegler Square, London, SE3



Total area (approx.): 102.8 sq. m (1106.5 sq. ft)

Balcony area (approx.): 8.1 sq. m (87.1 sq. ft)

## Dexters

Lee  
430-432 Lee High Road  
Lee  
London  
Sales  
020 8815 2210

Energy Rating: B. We aim to make our particulars both accurate and reliable. However they are not guaranteed; nor do they form part of an offer or contract. If you require clarification on any points then please contact us, especially if you're traveling some distance to view. Please note that appliances and heating systems have not been tested and therefore no warranties can be given as to their good working order.

 **RICS** | Regulated  
Estate Agent  
and Letting Agent

[dexters.co.uk](https://www.dexters.co.uk)