



West Park, SE9
£1,675,000

Dexters



West Park, SE9

A beautifully renovated six-bedroom detached home set on a sought-after residential road near Blackheath Village and Eltham.

Spanning three floors, this impressive period property offers generous living space, including a large through-reception with bay window and shutters, and a stylish kitchen with central island perfect for family living and entertaining. Upstairs are six well-proportioned bedrooms, one with access to a private roof terrace and two stunning bathrooms. The basement offers further potential, subject to permissions.

Additional features include restored herringbone flooring, underfloor heating, integrated speakers, and a large mature garden. Off-street parking for two cars completes this rare offering.

A substantial family home in a rarely available location early viewing is highly recommended.

West Park is a sought-after, tree-lined street in Mottingham, close to Eltham College and moments from Mottingham Village. It offers a village feel within walking distance of Mottingham Station.

The station provides regular trains to London Bridge, Charing Cross, Waterloo East, and Cannon Street, with easy links to Lewisham, the DLR, and Canary Wharf.

Features

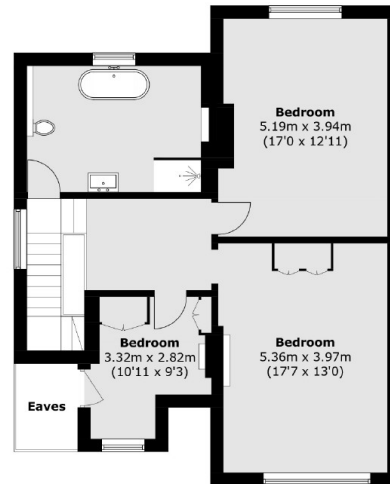
- Beautiful Detached Home
- Six Well Sized Bedrooms
- Large Lounge/Diner
- Spacious Kitchen/Diner
- Ample Off Road Parking
- Large Enclosed Rear Garden







West Park, London, SE9



Second Floor



Ground Floor

First Floor

Total area (approx.): 295.9 sq. m (3,185.1 sq. ft)
(Including Basement / Excluding Eaves)
Roof Terrace area (approx.): 14.3 sq. m (153.9 sq. ft)