



Kingshurst Road, SE12
£675,000

Dexters



Kingshurst Road, SE12

Located on a quiet residential street in the heart of SE12, this well-presented three-bedroom mid-terrace home offers generous living space ideal for families.

The property comprises a bright front reception room, a spacious kitchen/diner perfect for entertaining, and a large conservatory leading out to a well-maintained, enclosed rear garden. Upstairs are three well-proportioned bedrooms and a family bathroom.

Kingshurst Road is ideally positioned for local schools, parks and excellent transport links into central London, making it a perfect choice for growing families and commuters alike.

Lee train station, Colfes school and a variety of local shops, restaurants and bars are all within a short walk. The recently refurbished Lord Northbrook pub on Burnt Ash Road offers a varied selection of Ales and seasonal hot and cold food. Blackheath Village, Lewisham Town centre and DLR are also easily accessible.

Features

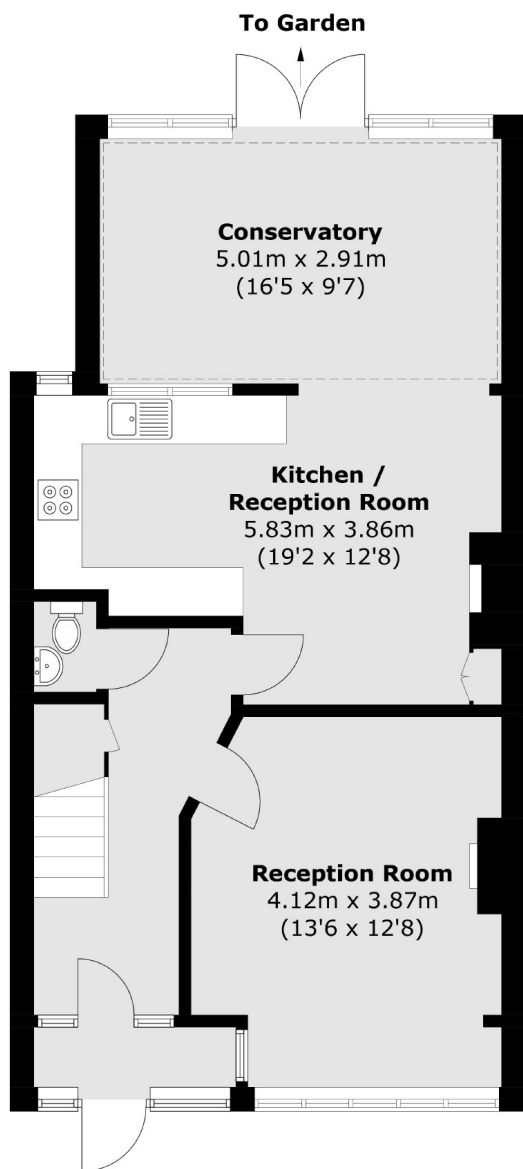
- Mid-Terrace Home
- Three Bedrooms
- Two Reception Rooms
- Conservatory
- Enclosed Rear Garden
- Popular Location



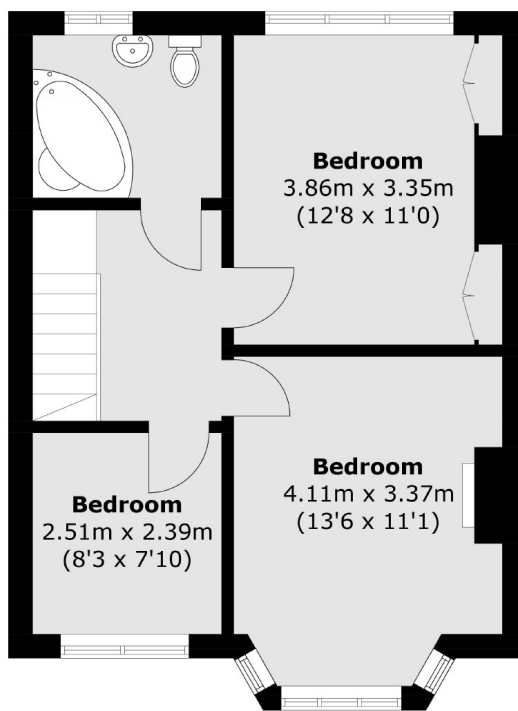




Kingshurst Road, London, SE12



Ground Floor



First Floor

Total area (approx.): 111.8 sq. m (1,203.3 sq. ft)