



Mulberry Place, SE9

£250,000

Offered with no upward chain, this well-presented one-bedroom first-floor flat is ideal for first-time buyers or investors. The property features a modern open-plan kitchen/living area, a spacious double bedroom with fitted wardrobe, and a stylish bathroom. Additional benefits include allocated parking and a convenient location close to local amenities and transport links.

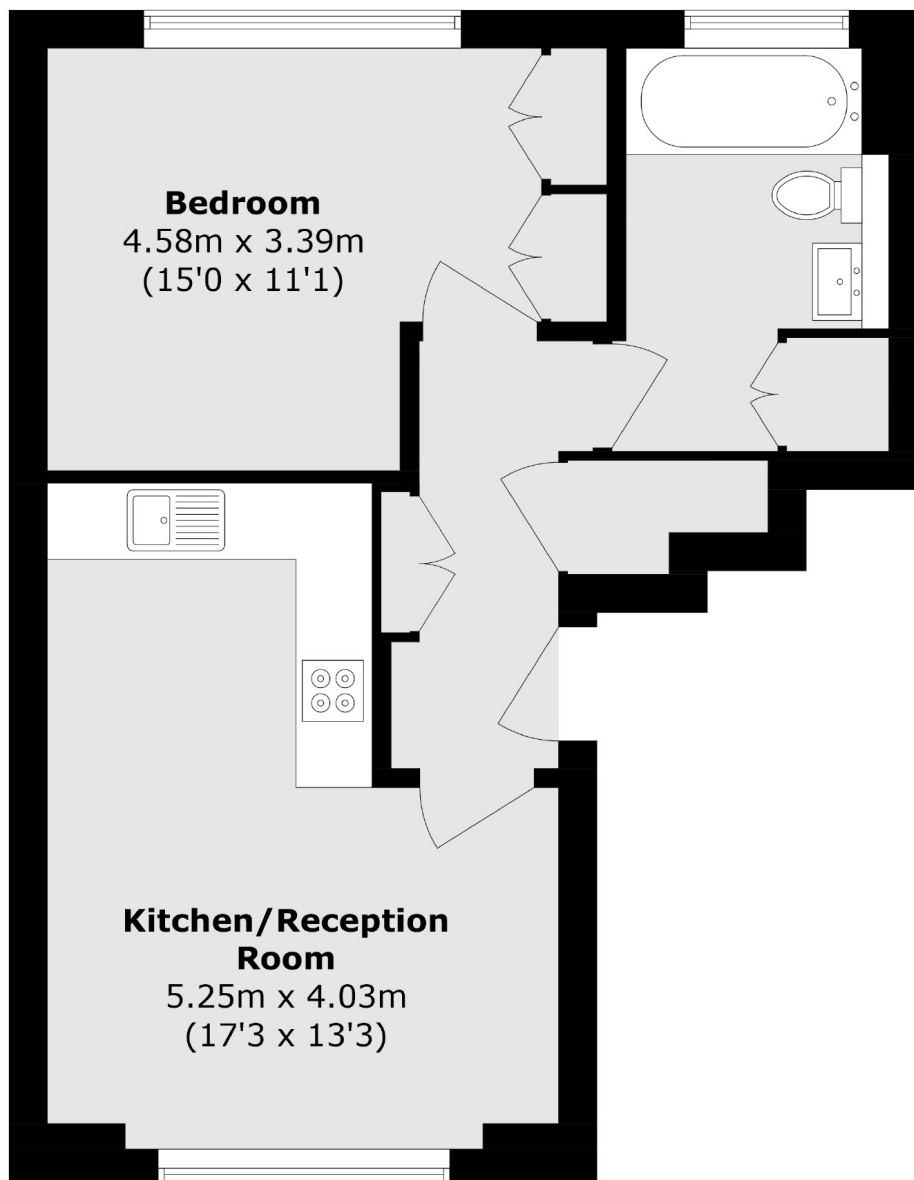
Eltham, in the Royal Borough of Greenwich, blends history and modern living. A recent £2 million High Street upgrade brought a new cinema and sky bar to the area.

With direct train links to central London, Eltham also offers attractions like Eltham Palace, the Tudor Barn's Heritage Restaurant, a leisure centre, and the scenic Well Hall.

Features

First Floor
Allocated Parking
Near Kidbrooke Station
Gated Development
High End Kitchen And
Bathroom
Modern Design

Mulberry Place, London, SE9



Total area (approx.): 44.5 sq. m (478.9 sq. ft)