



Lyme Farm Road, SE12

£400,000

Situated within the highly regarded Courtlands Estate, this well-presented ground floor flat offers spacious accommodation, a private garden, and a share of freehold.

The property features a bright lounge to the front, a well-equipped kitchen/diner, two generous bedrooms and a modern shower room.

Outside, there is a private rear garden providing an ideal space for relaxation or entertaining, along with a private garage. Offered with no upward chain.

Lyme Farm Road is a quiet tree lined cul de sac located within close proximity to Kidbrooke & Lee stations, the

Features

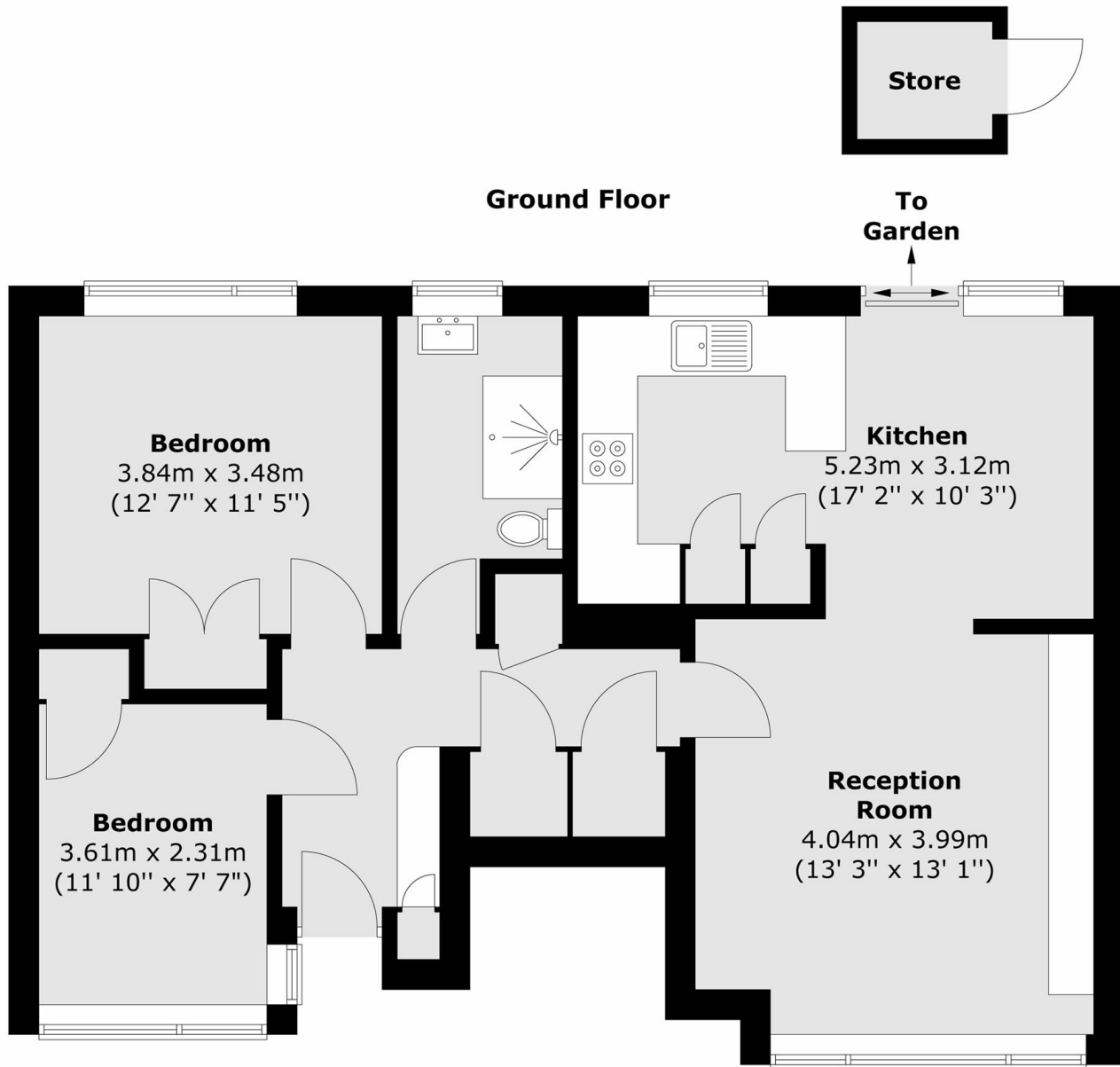
Ground Floor Flat
Two Double Bedrooms
Spacious Lounge
No Upward Chain
Private Rear Garden
Garage



Lyme Farm Road, SE12



Lyme Farm Road,
London, SE12



Total area (approx.) : 70.1 sq. m (754 sq. ft)
Total store area (approx.) : 1.7 sq. m (18 sq. ft)