



Lenham Road, SE12
£880,000

Dexters



Lenham Road, SE12

A well presented three bedroom end of terrace Victorian house located on a popular residential road in SE12. The property offers a spacious lounge/diner to the front with a bay window and plantation shutters, a separate and recently renovated kitchen/diner which leads through to an additional seating area overlooking the garden, and the added benefit of a separate utility/bathroom. To the rear is an enclosed garden (with a painted shed), ideal for families and entertaining. On the first floor there are three well proportioned bedrooms, a newly refurbished family bathroom and access to a loft space ideal for a large home office or study but with potential for other use such as a bedroom (STPP). The property is well presented throughout, having been entirely decorated or renovated in the last five years. It is offered to the market with no onward chain, making it an ideal family home. Early viewing is recommended.

Lenham Road is a fantastic location very close to Manor house gardens, Lee, Hither Green, Lewisham stations and just a short walk into Blackheath Village and Station. Travel times to London Bridge are 7 minutes from Lewisham Station and there is access to Canary Wharf, via DLR, London Canon Street, Charing Cross, Waterloo East and Victoria. Local shops and amenities including Sainsbury's and Marks and Spencer's food, are within a very short walk.

Features

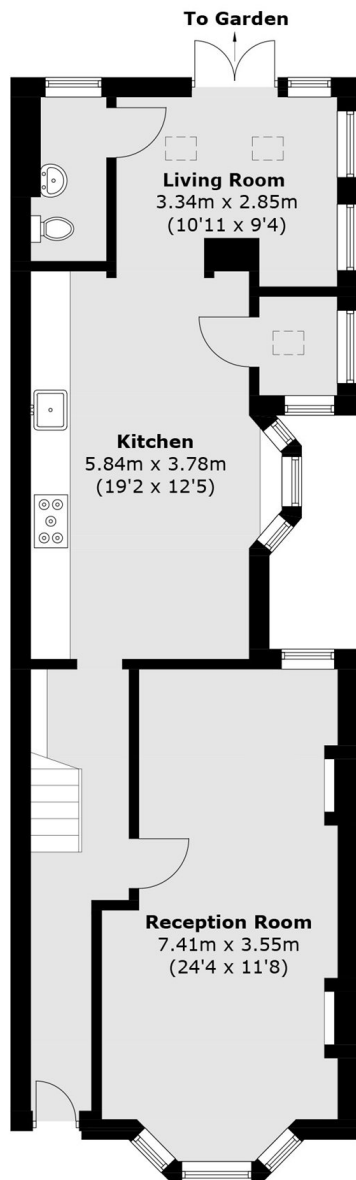
- End of Terrace Home
- Three Bedrooms
- Spacious Kitchen/Diner
- Utility Room
- Loft Space
- No Upward Chain



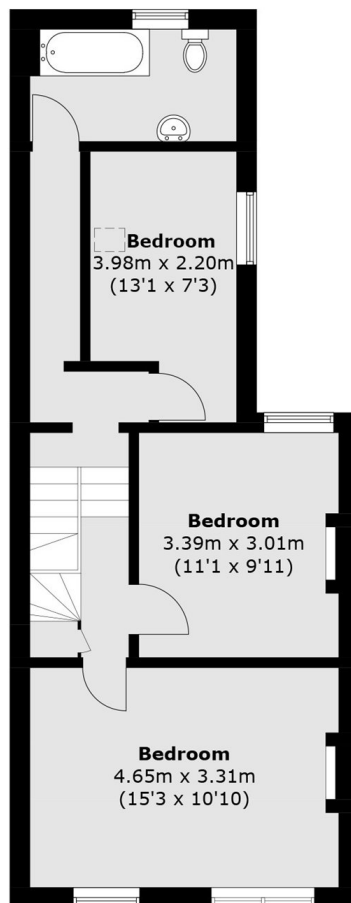




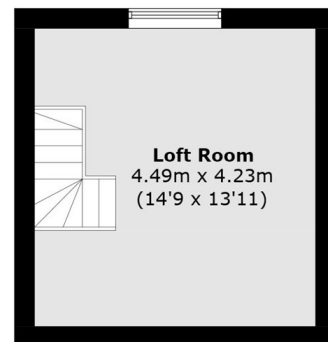
Lenham Road, London, SE12



Ground Floor



First Floor



Second Floor

Total area (approx.): 136.8 sq. m (1,472.4 sq. ft)