



Mulberry Place, SE9

£280,000

Offered with no upward chain, this well-presented two bedrooms flat is ideal for first-time buyers or investors. The property features a modern open-plan kitchen/living area, a two spacious double bedrooms, one with fitted wardrobe, and a stylish bathroom. Additional benefits include allocated parking and a convenient location close to local amenities and transport links.

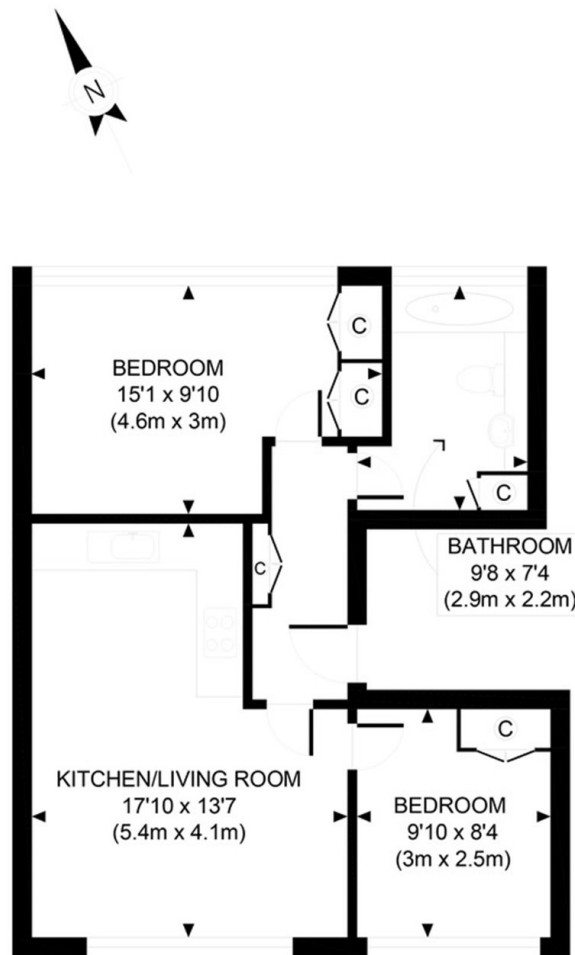
Eltham, in the Royal Borough of Greenwich, blends history and modern living. A recent £2 million High Street upgrade brought a new cinema and sky bar to the area.

With direct train links to central London, Eltham also offers attractions like Eltham Palace, the Tudor Barn's Heritage Restaurant, a leisure centre, and the scenic Well Hall.

Features

- Two Bedroom
- Allocated Parking
- Near Kidbrooke Station
- Gated Development
- High End Kitchen And Bathroom
- Modern Design

Mulberry Place, London, SE9



FIRST FLOOR
GROSS INTERNAL
FLOOR AREA 569 SQ FT

APPROX. GROSS INTERNAL FLOOR AREA 569 SQ FT / 53 SQM

Disclaimer: Floor plan measurements are approximate and are for illustrative purposes only. While we do not doubt the floor plan accuracy and completeness, you or your advisors should conduct a careful, independent investigation of the property in respect of monetary valuation

Copyright photoplan360

Dexters

Lee
430-432 Lee High Road
Lee
London
Sales
020 8815 2210

Energy Rating: . We aim to make our particulars both accurate and reliable. However they are not guaranteed; nor do they form part of an offer or contract. If you require clarification on any points then please contact us, especially if you're traveling some distance to view. Please note that appliances and heating systems have not been tested and therefore no warranties can be given as to their good working order.

 **RICS** | Regulated
Estate Agent
and Letting Agent

[dexters.co.uk](https://www.dexters.co.uk)