



Heather Road, SE12  
£699,950

**Dexters**



## Heather Road, SE12

\*\*\* Offers In Excess Of\*\*\* A beautifully extended and fully refurbished four-bedroom family home finished to a high standard throughout. The property offers four bedrooms, three bathrooms and two reception rooms. Recent works include new plumbing and electrics, a new roof, windows and doors, and full insulation.

A loft dormer and 3m rear extension create an impressive 6m x 6m open-plan kitchen/diner with Quartz worktops, a central island, integrated appliances, utility room and downstairs WC. Oak flooring features to the ground floor, with new carpets elsewhere and Amtico flooring to the bathrooms. Further benefits include underfloor heating to bathrooms, an Ideal combi boiler, instant hot water tap and a landscaped garden with Indian sandstone patio, new lawn, fencing, external lighting and power. A true turnkey home.

Conveniently located for Grove Park station with frequent trains into the city. Grove Park Station has direct links into London Bridge, Charing Cross, Blackfriars, Waterloo East & Cannon Street. Close by are several popular open spaces including Northbrook and Hornfair Parks. The popular Eltham College and Colles schools are both within easy reach as are the green spaces of Grove Park high street.

### Features

- Extended Family Home
- Four Bedrooms
- Open Plan Kitchen/Living
- High Spec Throughout
- Enclosed Rear Garden
- No Upward Chain

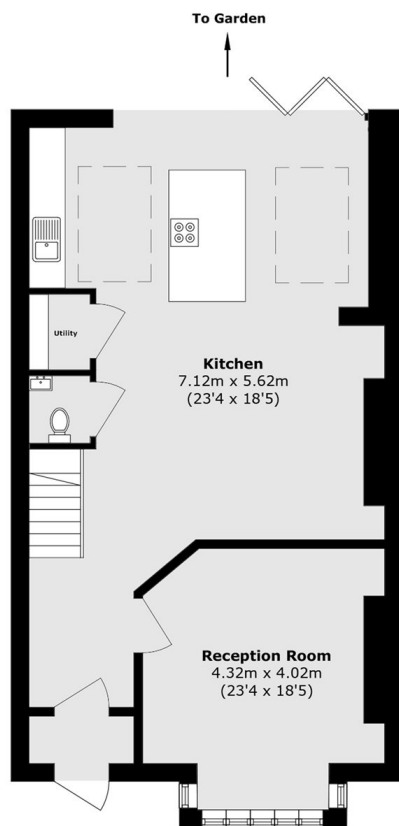




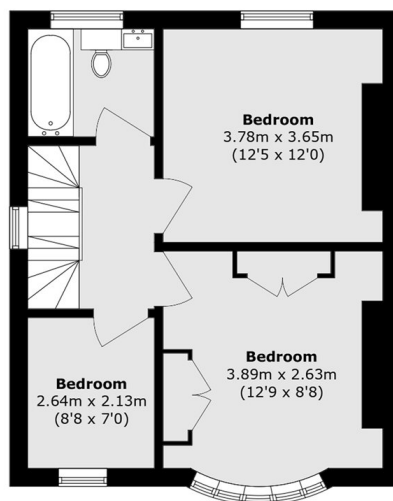




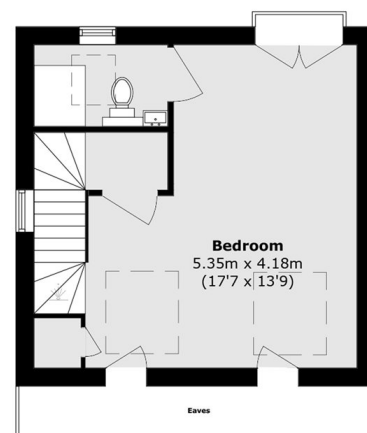
# Heather Road, London, SE12



**Ground Floor**



**First Floor**



**Second Floor**

Total area (approx.): 135.1 sq. m (1454.2 sq. ft)  
(Excluding Eaves)