



Strathaven Road, SE12  
£800,000

**Dexters**



## Strathaven Road, SE12

Situated on a substantial end plot, this three bedroom semi-detached house offers generous living space, excellent potential to extend (STPP), and a large detached garage that could be converted into a home office or annexe. The ground floor features a spacious through reception room ideal for entertaining, a separate kitchen, and a useful utility room. Upstairs are three well-proportioned bedrooms and a family bathroom. Outside, the property boasts an enclosed rear garden, a driveway providing off-street parking, and a detached garage perfect for storage or future development.

Located on a sought-after residential road in Lee, this home is within easy reach of local schools, green spaces and excellent transport links into central London.

### Features

- No Upward Chain
- Three Bedrooms
- Potential To Extend (STPP)
- Detached Garage
- Large End Plot
- Driveway



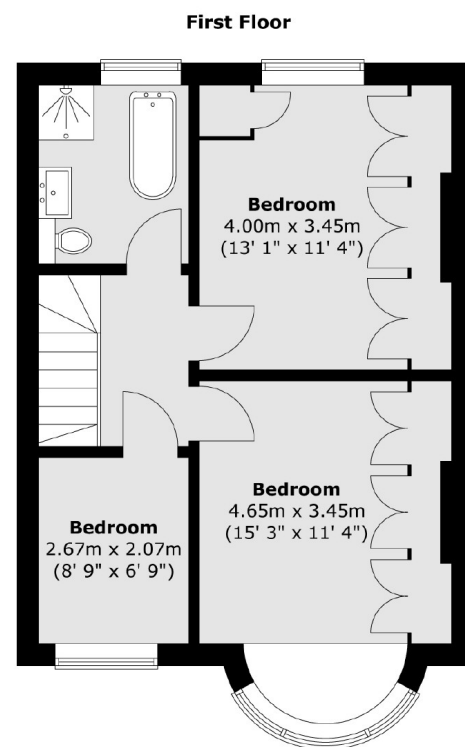
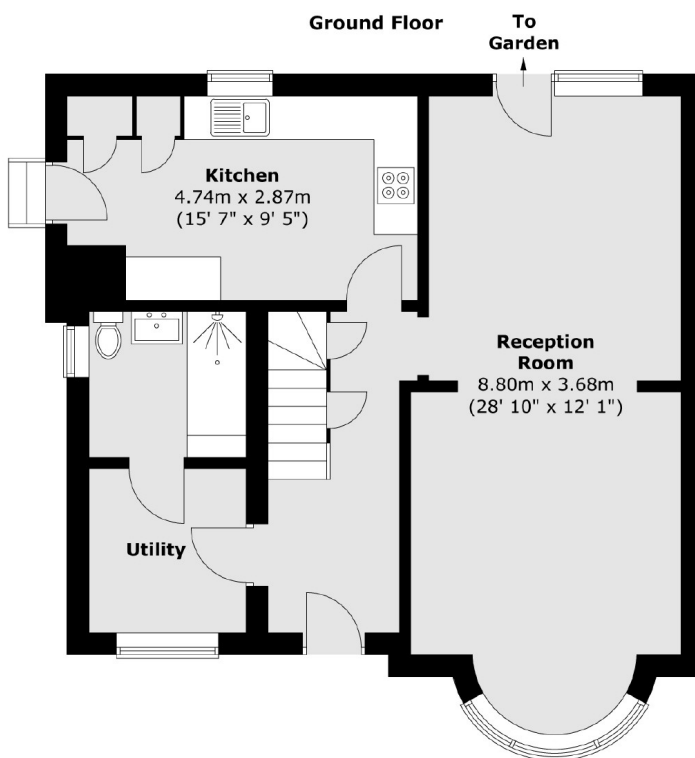
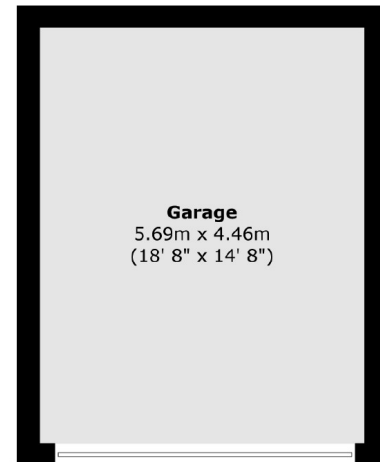








# Strathaven Road, London, SE12



Total area (approx.) : 109.1 sq. m (1174 sq. ft)  
Total garage area (approx.) : 25.4 sq. m (273 sq. ft)