



Endwell Road, SE4

£325,000

This first floor split level apartment, comes with lounge, kitchen, bathroom and three bedrooms.

The property is part of a period conversion and would be ideal for investors or buyers who want to add their own stamp.

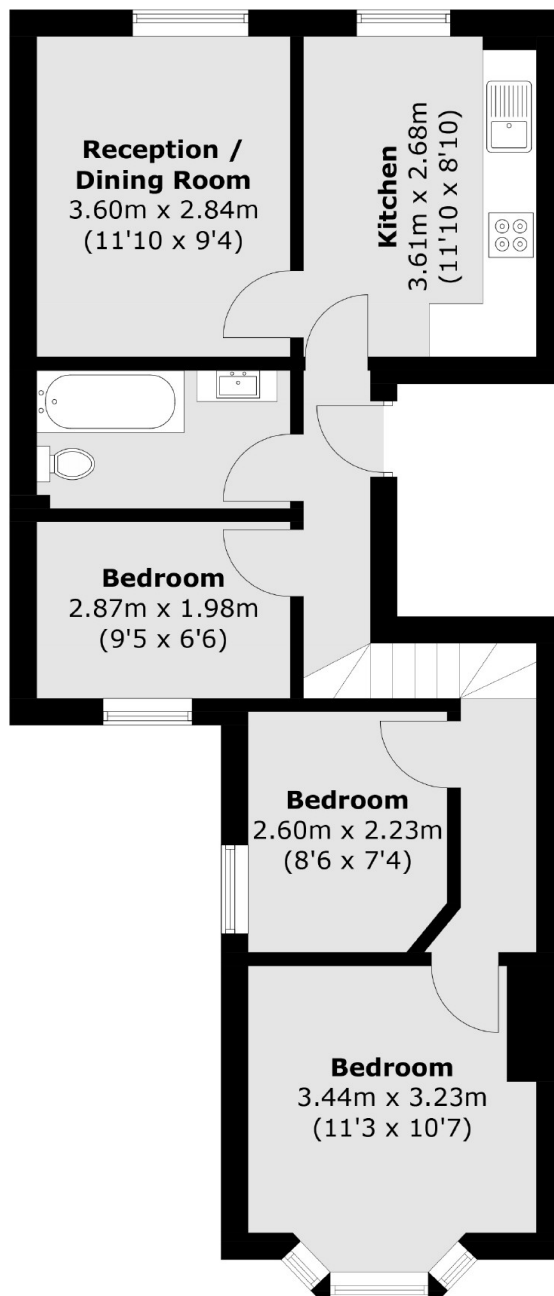
Brockley Station is less than a 10 minute walk away, offering easy access to London Bridge in under 15 minutes and the overground into Highbury and Islington.

Other stations within walking distance are Nunhead, New Cross and New Cross Gate Stations.

Features

Three bedrooms
First Floor
Excellent Location
Great transport links
Investment opportunity
Chain free

Endwell Road, London, SE4



Total area (approx.): 55.8 sq. m (600.6 sq. ft)

Dexters

New Cross
256 New Cross Road
London
SE14 5PL
Sales
020 7313 3660

Energy Rating: . We aim to make our particulars both accurate and reliable. However they are not guaranteed; nor do they form part of an offer or contract. If you require clarification on any points then please contact us, especially if you're traveling some distance to view. Please note that appliances and heating systems have not been tested and therefore no warranties can be given as to their good working order.

 **RICS** | Regulated
Estate Agent
and Letting Agent

[dexters.co.uk](https://www.dexters.co.uk)