



## Moulding Lane, SE14

### £365,000

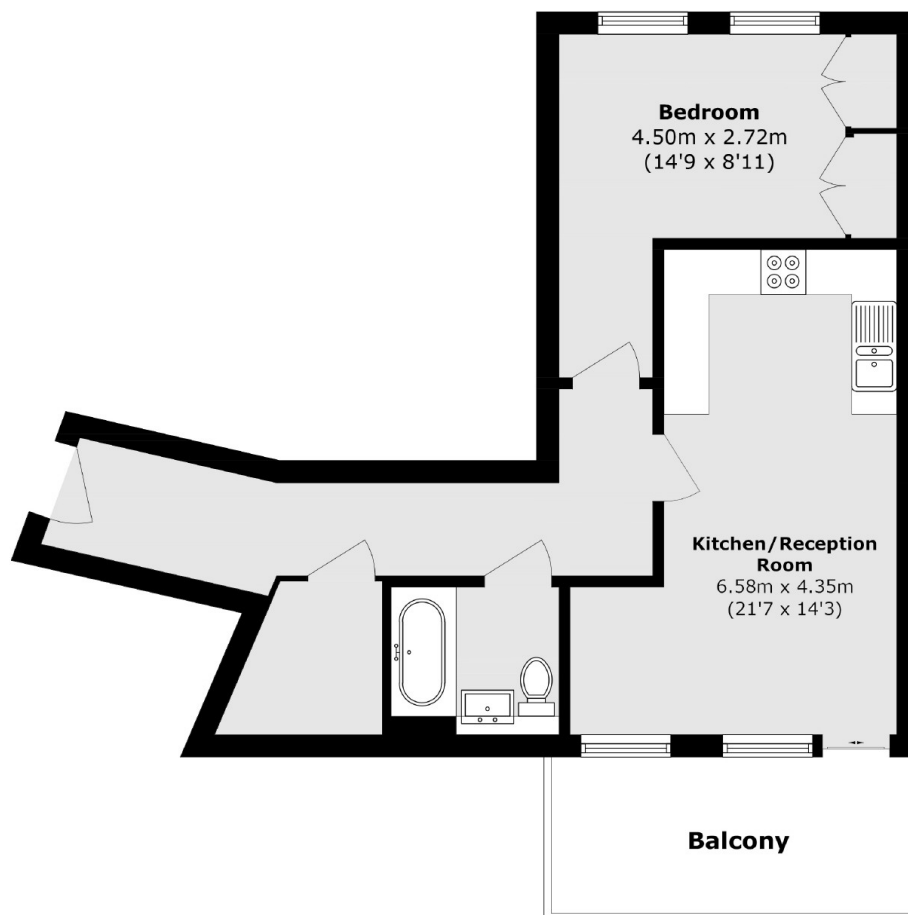
Stunning second floor apartment located within the highly regarded Deptford Anthology development. Offering almost 650 sq ft of living space, the property is finished with an excellent specification throughout, with stone work surfaces, Siemens appliances, and built in storage throughout. There is a large open plan kitchen/ reception area, measuring over 21' in length, with a 106 sq ft balcony which is south west facing.

Deptford Anthology is located around 0.5 miles from both New Cross Mainline/Overground and Deptford High Street Mainline stations, providing access to central London within 15 minutes. Deptford High Street is known for its trendy bars and cafe's, as well as the Deptford Market.

### Features

- One Bedroom Apartment
- Great Specification
- Over 640 Sq Ft
- Large South West Facing Balcony
- Second Floor
- Open Plan Living

# Moulding Lane, London, SE14



Total area (approx.): 59.8 sq. m (643.6 sq. ft)

Balcony area (approx.): 9.9 sq. m (106.5 sq. ft)