



Samuel Close, SE14

£265,000

Offered with No Chain, and situated within a quiet modern development, this two double bedroom flat boasts a spacious open plan reception and dining space, with a separate kitchen, modern bathroom, ample storage and allocated parking. The property underwent a full renovation six years ago, including a full electrical rewire, installation of a new boiler and double glazing throughout.

Features

Two Double Bedrooms
Second Floor
Excellent Location
Allocated Parking
Chain Free
Great Transport Links

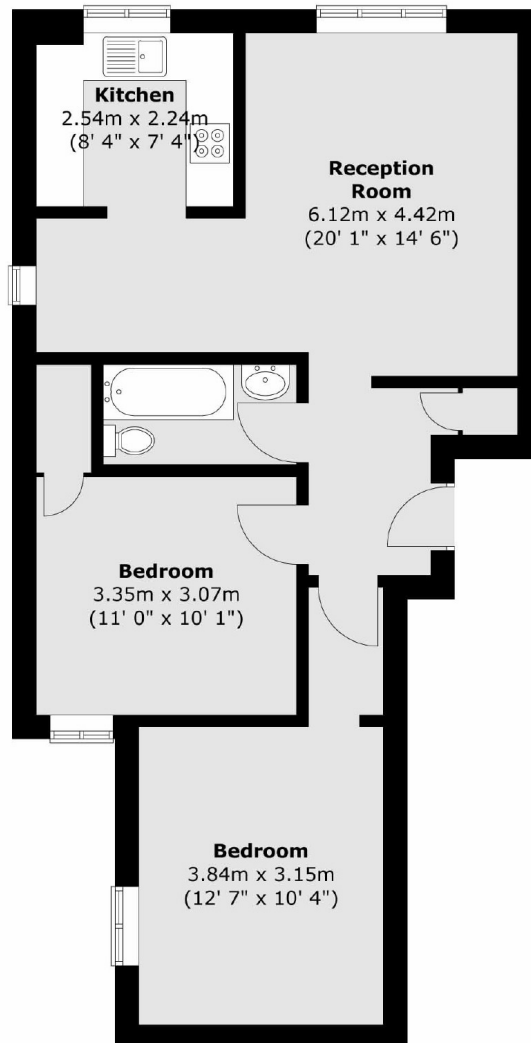


Samuel Close, SE14

Greene Court is located 0.7 miles from New Cross Gate station and South Bermondsey station offering excellent transport links. A wide range of shops, cafés and restaurants are within easy reach.



Samuel Close,
London, SE14



Total area (approx.) : 62.1 sq. m (668 sq. ft)

Dexters

New Cross
256 New Cross Road
London
SE14 5PL
Sales
020 7313 3660

Energy Rating: . We aim to make our particulars both accurate and reliable. However they are not guaranteed; nor do they form part of an offer or contract. If you require clarification on any points then please contact us, especially if you're traveling some distance to view. Please note that appliances and heating systems have not been tested and therefore no warranties can be given as to their good working order.

 **RICS** | Regulated
Estate Agent
and Letting Agent

dexters.co.uk