



## Brockley Cross, SE4

### £265,000

Located in the heart of Brockley, this well-presented 32 sq m studio apartment offers a stylish and efficient living space in one of South East London's most vibrant neighbourhoods. The apartment is set within a well-maintained building with easy access to local amenities including independent cafes, restaurants, galleries, and green spaces like Hilly Fields Park-all within walking distance.

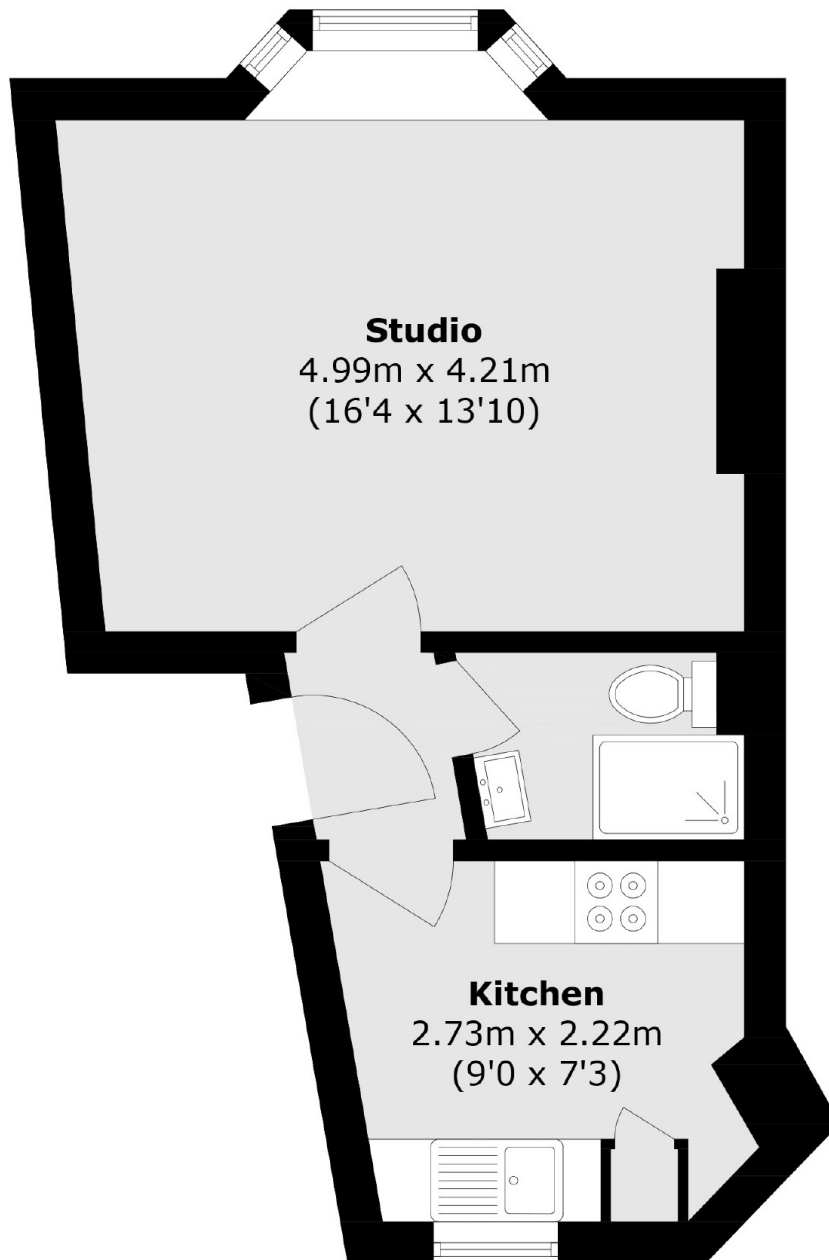
Whether you're looking for a London pied-à-terre, a buy-to-let opportunity, or a compact, low-maintenance home, this studio is an excellent choice in a sought-after SE4 location.

Situated on Brockley Cross, the property is ideally positioned just moments from Brockley Station (Overground & National Rail) providing fast links into London Bridge, Shoreditch, and Canary Wharf. Whether you're a first-time buyer, investor, or commuter, this apartment offers a perfect blend of comfort and connectivity.

### Features

- Victorian Conversion
- Studio Apartment
- Contemporary Decor
- Excellent Transport Links
- Bright And Open Plan
- Separate Kitchen

Brockley Cross,  
London, SE4



Total area (approx.): 31.9 sq. m (343.3 sq. ft)

**Dexters**

New Cross  
256 New Cross Road  
London  
SE14 5PL  
Sales  
020 7313 3660

Energy Rating: . We aim to make our particulars both accurate and reliable. However they are not guaranteed; nor do they form part of an offer or contract. If you require clarification on any points then please contact us, especially if you're traveling some distance to view. Please note that appliances and heating systems have not been tested and therefore no warranties can be given as to their good working order.

 **RICS** | Regulated  
Estate Agent  
and Letting Agent

[dexters.co.uk](http://dexters.co.uk)