



Reservoir Road, SE4

£650,000

Located on the peaceful and picturesque Reservoir Road in SE4, just moments from the green open spaces of Telegraph Hill Park, this beautifully presented two-bedroom garden flat offers over 1,100 sq ft of thoughtfully designed living space and a large private garden. This extended ground-floor flat occupies the lower level of a handsome period building and has been finished to a high standard throughout, offering a perfect blend of character and contemporary style. The open-plan kitchen/living space is ideal for entertaining or relaxing, with large windows and doors opening directly onto the garden.

The flat is ideally situated within easy reach of Nunhead

Features

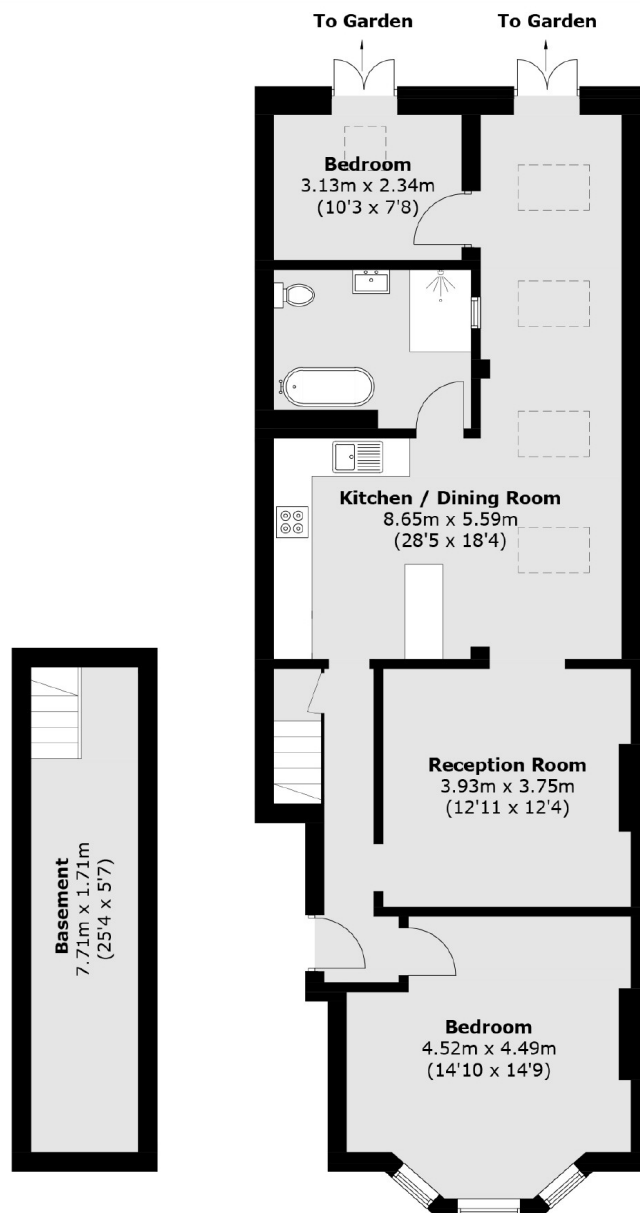
- Victorian Conversion
- Two Bedroom Garden Flat
- Large Extension
- Telegraph Hill Conservation Area
- Excellent Transport Links
- Cellar



Reservoir Road, SE4



Reservoir Road, London, SE4



Basement

Ground Floor

Total area (approx.): 102.4 sq. m (1,102.2 sq. ft)
(Including Basement)