



Jerningham Road, SE14

£530,000

Located on one of the most sought-after streets in New Cross, this beautifully presented split level two bedroom garden flat offers an exceptional blend of period charm and contemporary living. Set within an elegant Victorian townhouse on Jerningham Road, with well-proportioned interiors, and a generous garden space.

Features

Two Bedroom Garden Flat
Excellent Condition
Throughout
Split Level
Close To Transport
Large Garden
Refurbished Kitchen &
Bathroom

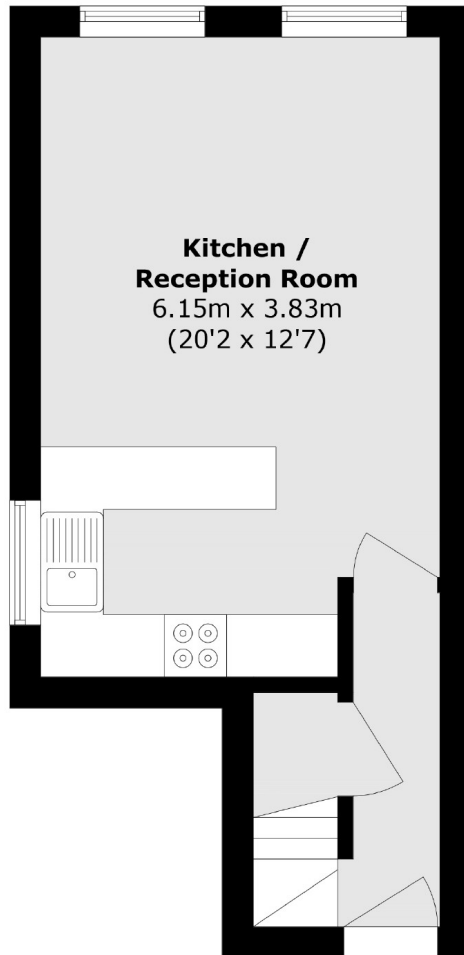


Jerningham Road, SE14

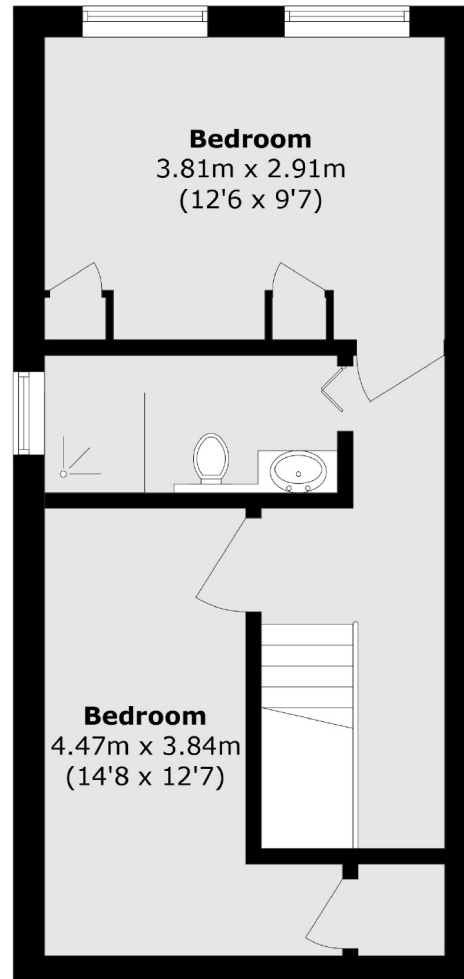
Jerningham Road is one of the prime roads on Telegraph Hill. New Cross Gate station is around a 5 minute walk. Further amenities include Coffee Shops, bakeries and cafe's as well as Sainsbury's. Goldsmiths, University of London and Haberdasher Hatcham College are just a few of the nearby educational facilities.



Jerningham Road,
London, SE14



First Floor



Second Floor

Total area (approx.): 61.7 sq. m (664.1 sq. ft)