



New Cross Road, SE14

£2,600 Per calendar month

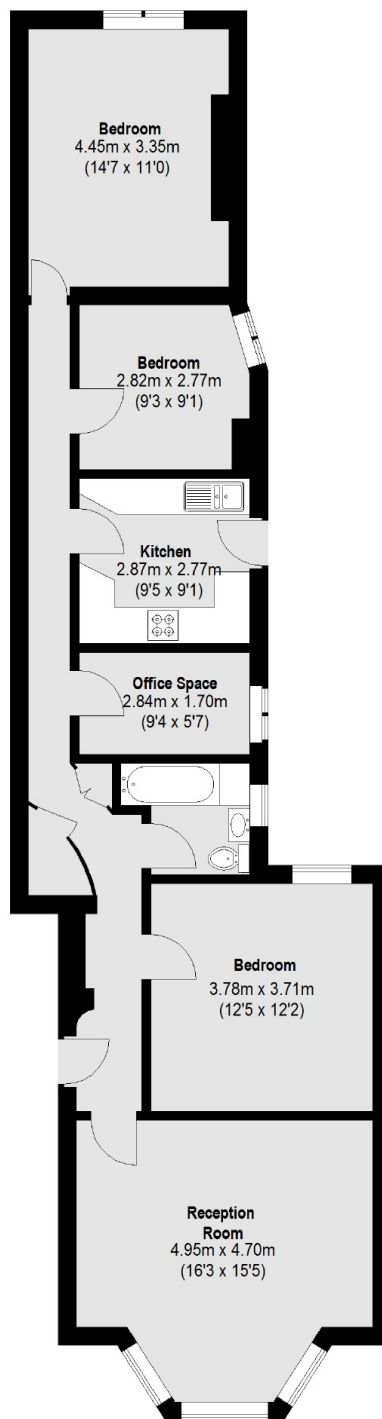
A three double bedroom ground floor apartment including modern features throughout, access to communal gardens and an additional study room.

Located on New Cross Road, you are within walking distance to New Cross and New Cross Gate stations as well as all the amenities that New Cross Road has to offer.

Features

Ground Floor Apartment
Three Double Bedrooms
Modern Throughout
Close To Station
Communal Garden
Furnished

New Cross Road, London, SE14



Ground Floor

Total area (approx.): 91.11 sq. m (981 Sq. ft)

Dexters

New Cross
256 New Cross Road
London
SE14 5PL
Lettings
020 7313 3661

Energy Rating: D. We aim to make our particulars both accurate and reliable. However they are not guaranteed; nor do they form part of an offer or contract. If you require clarification on any points then please contact us, especially if you're traveling some distance to view. Please note that appliances and heating systems have not been tested and therefore no warranties can be given as to their good working order.

 **RICS** | Regulated
Estate Agent
and Letting Agent

[dexters.co.uk](https://www.dexters.co.uk)