



Rotherhithe New Road, SE16

£560,000

Offers in Excess of £599,950. Chancellor House is a brand new development in the heart of trendy South Bermondsey. Two double bedrooms, a large single bedroom, two bathrooms, and a spacious balcony with stunning panoramic views across the whole of London. The development also has a resident's gym, concierge service and a large communal roof terrace. This property further benefits from its own private parking space.

Features

- Three Bedrooms
- Parking Space
- Stunning Views
- Communal Roof Terrace
- Concierge
- On Site Gym



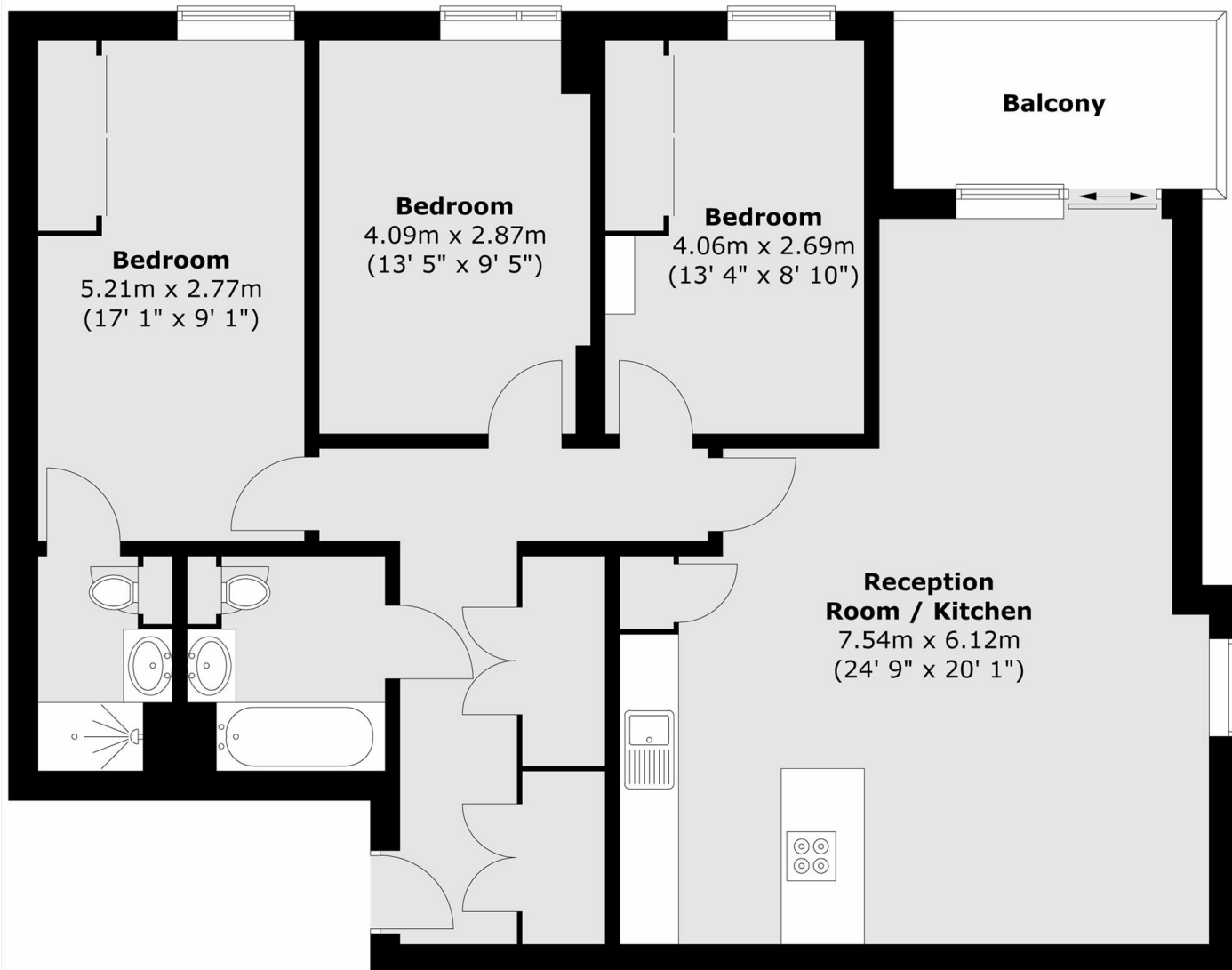
Rotherhithe New Road, SE16

The development is just half a mile from South Bermondsey Overground which links to London Bridge in just 7 minutes. Great bus links from Old Kent Road provide easy access to the Bakerloo Line.



Rotherhithe New Road,
London, SE16

Fourteenth Floor



Total area (approx.) : 99.7 sq. m (1073 sq. ft)
Total balcony area (approx.) : 5.1 sq. m (55 sq. ft)