



Jerningham Road, SE14

£2,300 Per calendar month

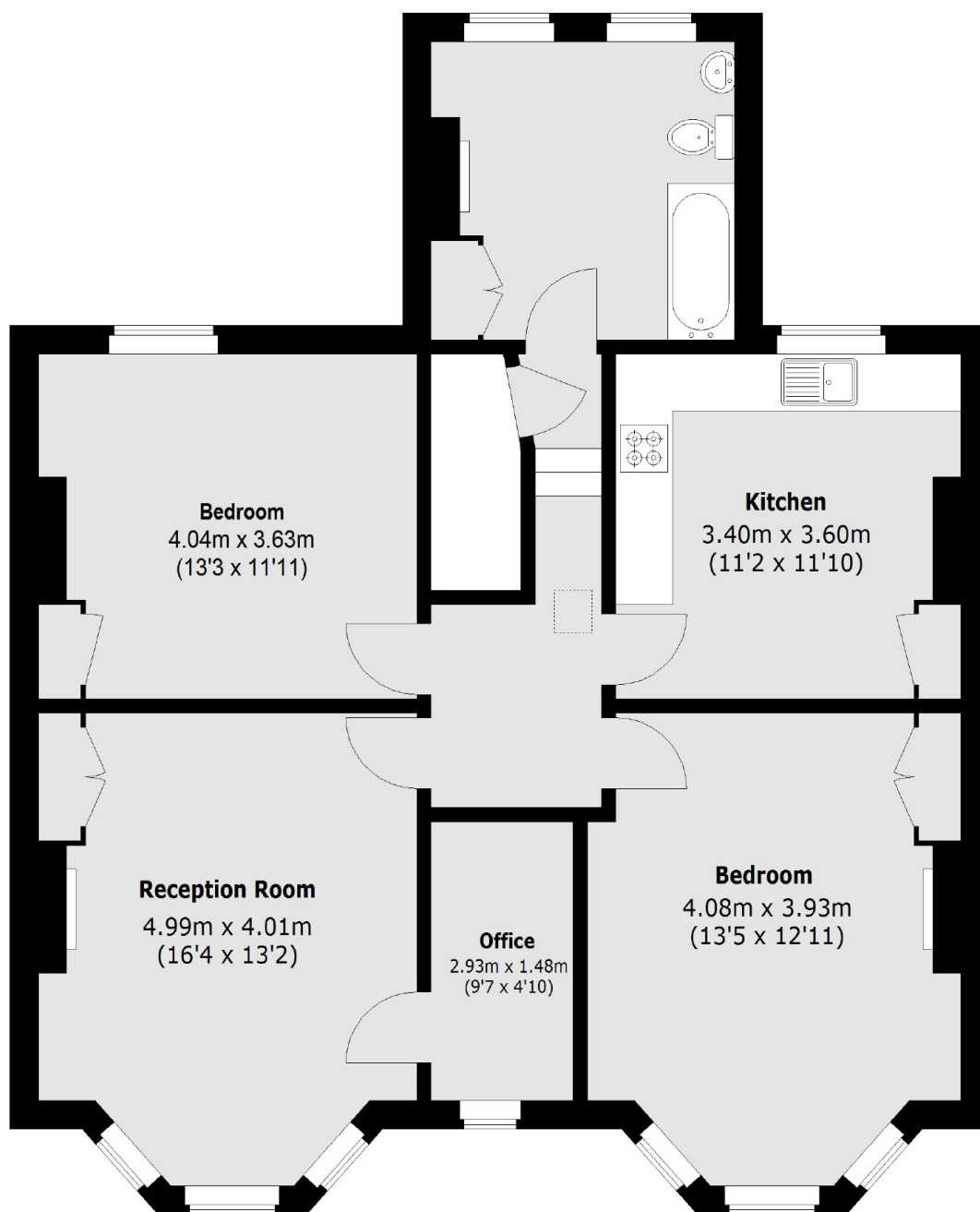
At over 960 square feet is this first floor two double bedroom Victorian conversion including modern features throughout, eat-in kitchen, ample storage, work from home office room and a large living space. NO HMO.

Located in the sought after Telegraph Hill Conservation area ideally located with excellent transport links, popular gastro pubs and cafés.

Features

Victorian Conversion
Two Double Bedrooms
Modern Throughout
Eat-In Kitchen
Telegraph Hill Conservation Area
Unfurnished

Jerningham Road, London, SE14



Total area (approx.): 89.2 sq. m (960.1 sq. ft)