



Lewisham Way, SE14

£275,000

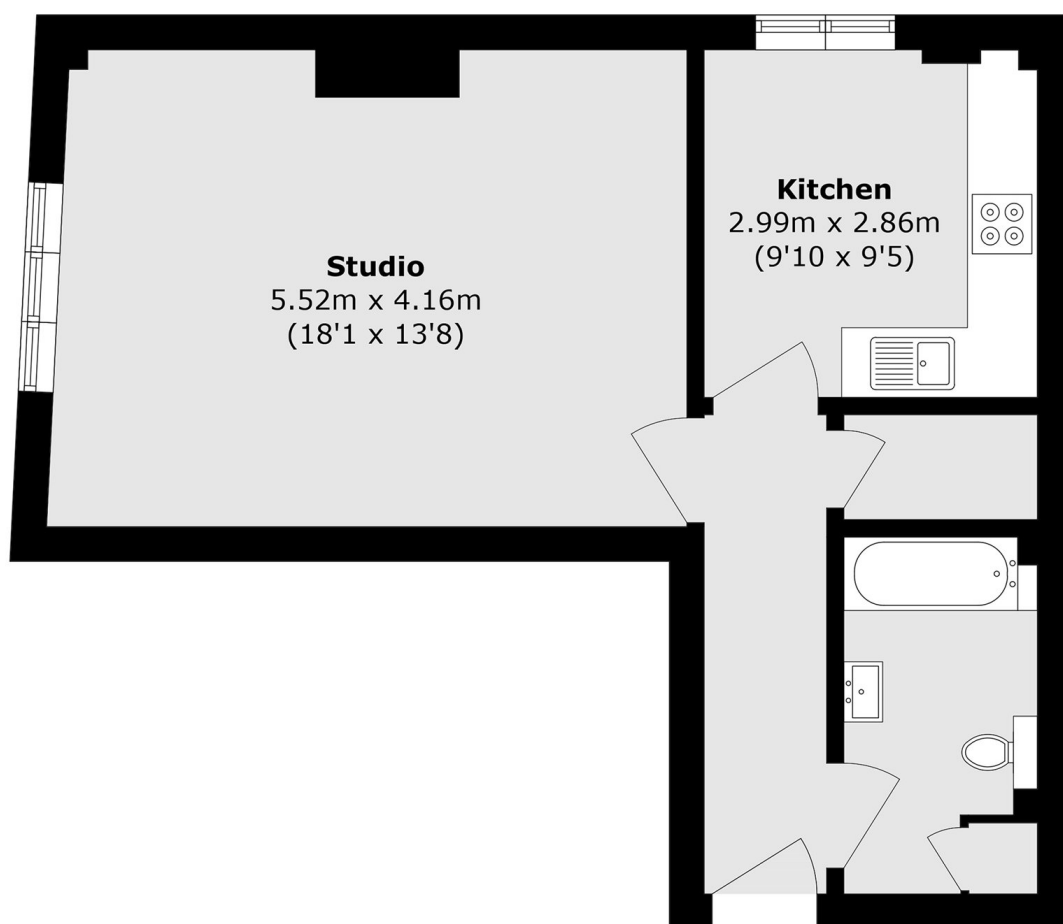
This spacious studio with high ceilings comes with over 450sq feet of living space, a separate kitchen and a family bathroom. There is access to a communal roof terrace with views across the city and its own private gated parking space. This property is offered with no onward chain and would make an ideal investment.

Situated within easy reach of New Cross, New Cross Gate, Deptford, and Lewisham stations, this home offers excellent transport links via Overground, National Rail, DLR, and frequent bus routes. The vibrant local neighbourhoods of Telegraph Hill, Brockley, Ladywell, and Crofton Park provide a wealth of cafes, restaurants, and pubs, making it an ideal location for enjoying London living.

Features

- Studio Apartment
- Communal Roof Terrace
- Private Parking
- No Onward Chain
- Period Features
- Gas Central Heating

Lewisham Way,
London, SE14



Total area (approx.): 43.5 sq. m (468.2 sq. ft)