



Manor Avenue, SE4
£400,000

Dexters



Manor Avenue, SE4

Nestled on one of Brockley's most desirable streets, this charming one-bedroom apartment on Manor Avenue seamlessly blends period elegance with contemporary living. Set within a handsome Victorian conversion, the property offers an inviting retreat ideally suited to first-time buyers, professionals, or investors. The apartment features a bright and generously proportioned reception room, enhanced by high ceilings and large sash windows that create a warm and refined atmosphere. The space is comfortably sized to accommodate both a seating area and a dining table, making it ideal for everyday living and entertaining.

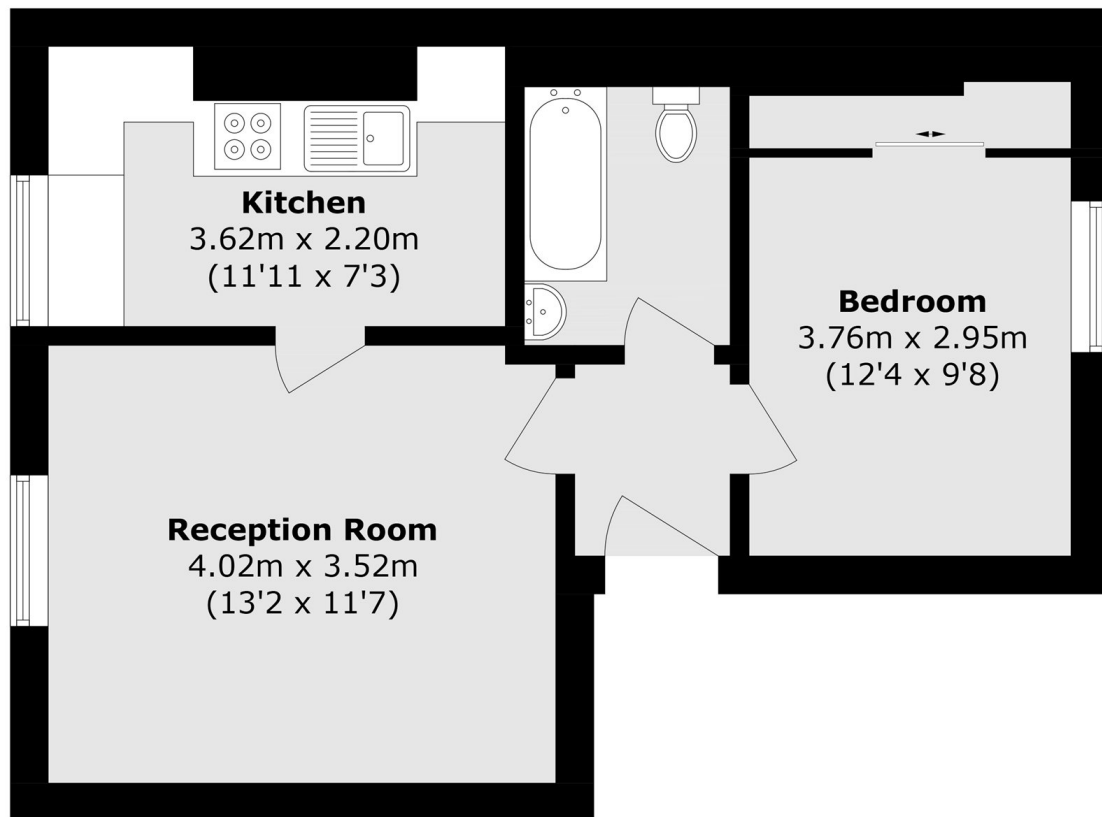
The kitchen is thoughtfully designed with granite-style worktops, wood base and wall units, and a classic white tiled backsplash. A breakfast bar positioned in front of the window provides a charming spot for casual dining while making the most of the natural light. The main bedroom overlooks the rear of the property and benefits from a peaceful, leafy green outlook, along with built-in wardrobes offering excellent storage. The bathroom is well-appointed and features a bath with an overhead shower. Further benefits include on street parking and access to a large shared garden, perfect for relaxing or entertaining outdoors.

Features

- Share Of Freehold
- One Bedroom
- Victorian Conversion
- Brockley Conservation Area
- Shared Garden
- Long Lease



Manor Avenue,
London, SE4



Total area (approx.): 39.9 sq. m (429.4 sq. ft)