



## Musgrove Road, SE14

£2,200 Per calendar month

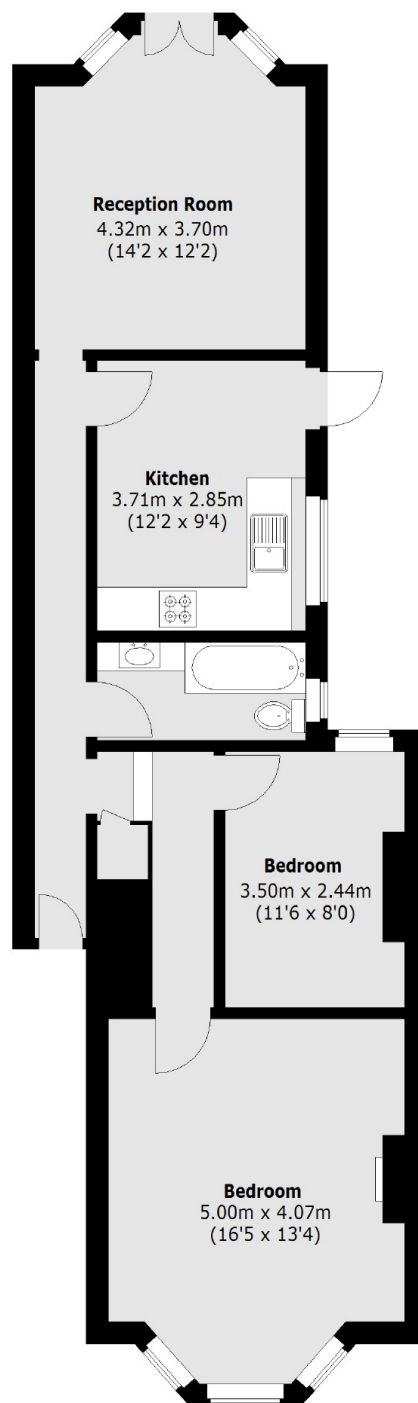
A two double bedroom, hall floor Victorian Conversion flat situated in the sought after Telegraph Hill Conservation area with modern features and ample storage throughout.

Musgrove Road is located in the sought after Telegraph Hill Conservation area, close to Telegraph Hill Park, ideally located with excellent transport links including Brockley, Nunhead & New Cross stations, popular gastro pubs and cafés.

### Features

- Two Double Bedrooms
- Private Rear Garden
- Hall Floor
- Unfurnished
- Victorian Conversion
- Close To Station

# Musgrove Road, London, SE14



Total area (approx.): 71.25 sq. m (767 sq. ft)

## Dexters

New Cross  
256 New Cross Road  
London  
SE14 5PL  
Lettings  
020 7313 3661

Energy Rating: C. We aim to make our particulars both accurate and reliable. However they are not guaranteed; nor do they form part of an offer or contract. If you require clarification on any points then please contact us, especially if you're traveling some distance to view. Please note that appliances and heating systems have not been tested and therefore no warranties can be given as to their good working order.

 **RICS** | Regulated  
Estate Agent  
and Letting Agent

[dexters.co.uk](https://www.dexters.co.uk)