



Batavia Road, SE14

£525,000

Set within one of New Cross's most sought-after modern developments, this outstanding two-bedroom apartment offers generous living space, an exceptional location and attractive tree-lined views from a private balcony.

The accommodation comprises a principal bedroom with en-suite, a second double bedroom, a contemporary family bathroom, and a bright open-plan kitchen/living/dining area with direct access to the balcony.

Additional features include floor-to-ceiling windows in the reception room and bedrooms, double glazing throughout, two hallway storage cupboards and lift access.

Features

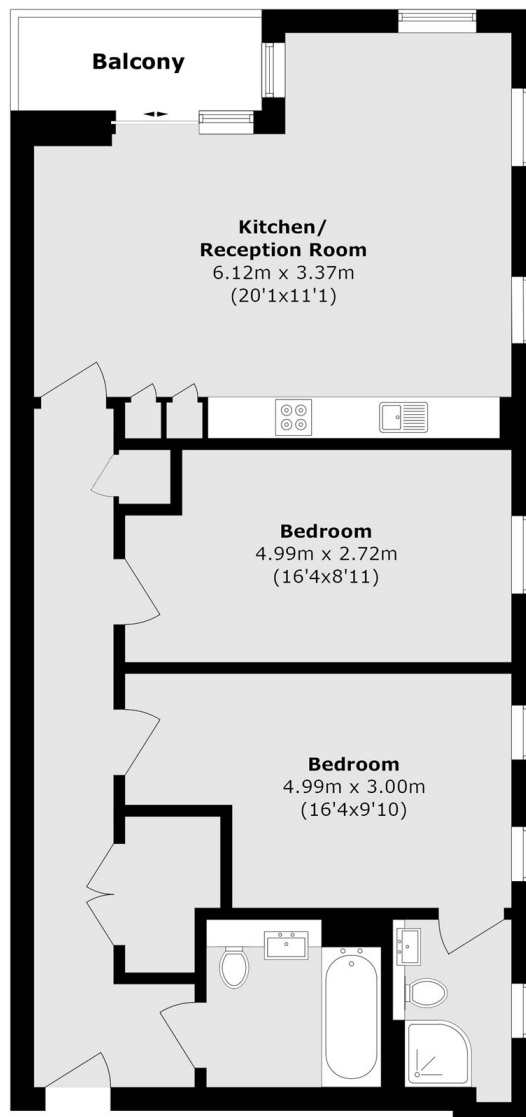
- Modern Development
- Two Double Bedrooms
- Ensuite
- Private Balcony
- Lift Access
- Close To New Cross Gate Station



Batavia Road, SE14



Batavia Road,
London, SE14



Total area (approx.): 78.2 sq. m (841.7 sq. ft)
(Excluding Balcony)
Balxcony area (approx.): 4.5 sq. m (48.4 sq. ft)

Dexters

New Cross
256 New Cross Road
London
SE14 5PL
Sales
020 7313 3660

Energy Rating: C. We aim to make our particulars both accurate and reliable. However they are not guaranteed; nor do they form part of an offer or contract. If you require clarification on any points then please contact us, especially if you're traveling some distance to view. Please note that appliances and heating systems have not been tested and therefore no warranties can be given as to their good working order.

 **RICS** | Regulated
Estate Agent
and Letting Agent

[dexters.co.uk](https://www.dexters.co.uk)