



## Gloucester Terrace, W2

### £675,000

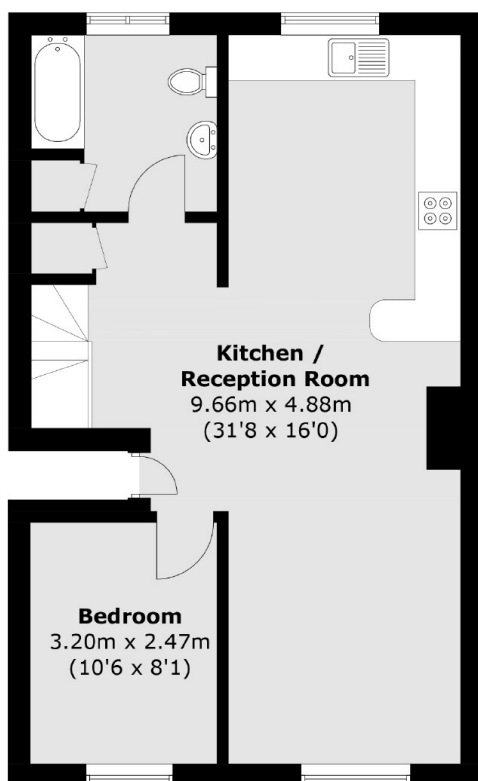
A spacious three double bedroom, split-level apartment, measuring just over 1,000 Sq.Ft on the top two floors of a white stucco fronted building. With a separate reception room and kitchen, wooden floors and plenty of storage this is an ideal investment or first time purchase.

Gloucester Terrace is in between Royal Oak underground and Paddington Station, giving fantastic access across and out of London. The green spaces of Hyde Park and plenty of amenities are also close by.

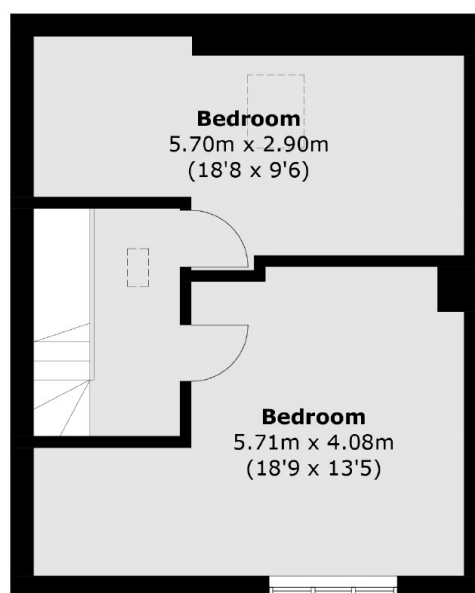
### Features

- Three Bedrooms
- Duplex
- White Stucco Fronted
- Separate Kitchen
- Hyde Park
- Close to Amenities

# Gloucester Terrace, London, W2



**Third Floor**



**Fourth Floor**

Total area (approx.): 93.7 sq. m (1,008.6 sq. ft)