



## Faraday Road, W10

£575,000

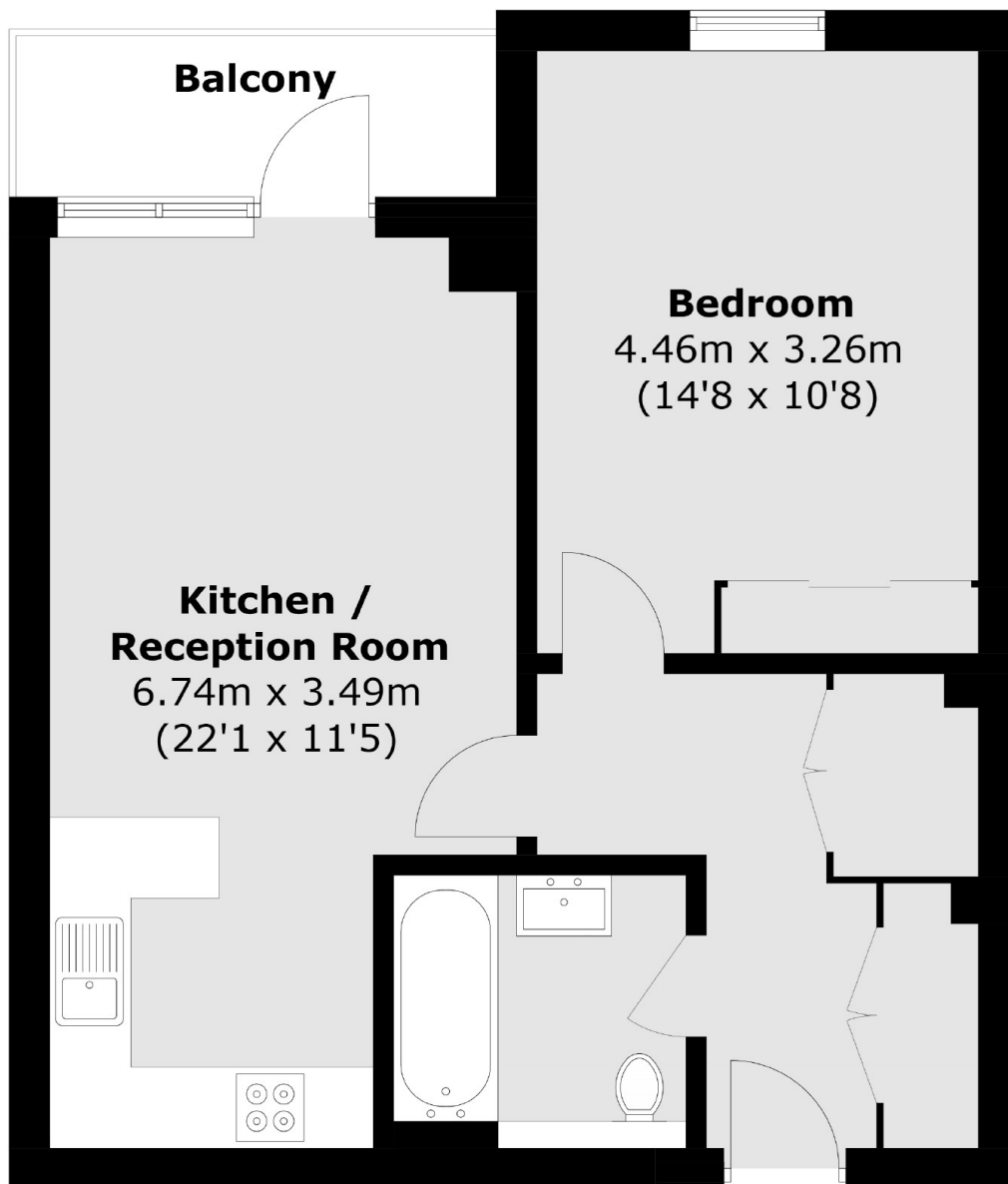
A spacious and modern one bedroom apartment with a balcony set within the Portobello Square development in Notting Hill. The apartment benefits from a large open plan reception and kitchen space with room to dine and large floor to ceiling windows offering plenty of natural light throughout.

The popular development is tucked away behind the fashionable Golborne Road and next to the famous Portobello Road. Ladbroke Grove & Westbourne Park Road stations provide excellent transport links.

### Features

- One Bedroom
- Private Balcony
- Lift
- Building Caretaker
- Open Plan Kitchen
- Portobello Road

Faraday Road,  
London, W10



Total area (approx.): 51.0 sq. m (549.0 sq. ft)  
Balcony : 4.2 sq. m (45.2 sq. ft)

**Dexters**

Westbourne Grove  
120 Westbourne Grove  
London  
W11 2RR  
Sales  
020 7313 3600

Energy Rating: B. We aim to make our particulars both accurate and reliable. However they are not guaranteed; nor do they form part of an offer or contract. If you require clarification on any points then please contact us, especially if you're traveling some distance to view. Please note that appliances and heating systems have not been tested and therefore no warranties can be given as to their good working order.

 **RICS** | Regulated  
Estate Agent  
and Letting Agent

[dexters.co.uk](https://www.dexters.co.uk)