



Hatherley Grove, W2

£650,000

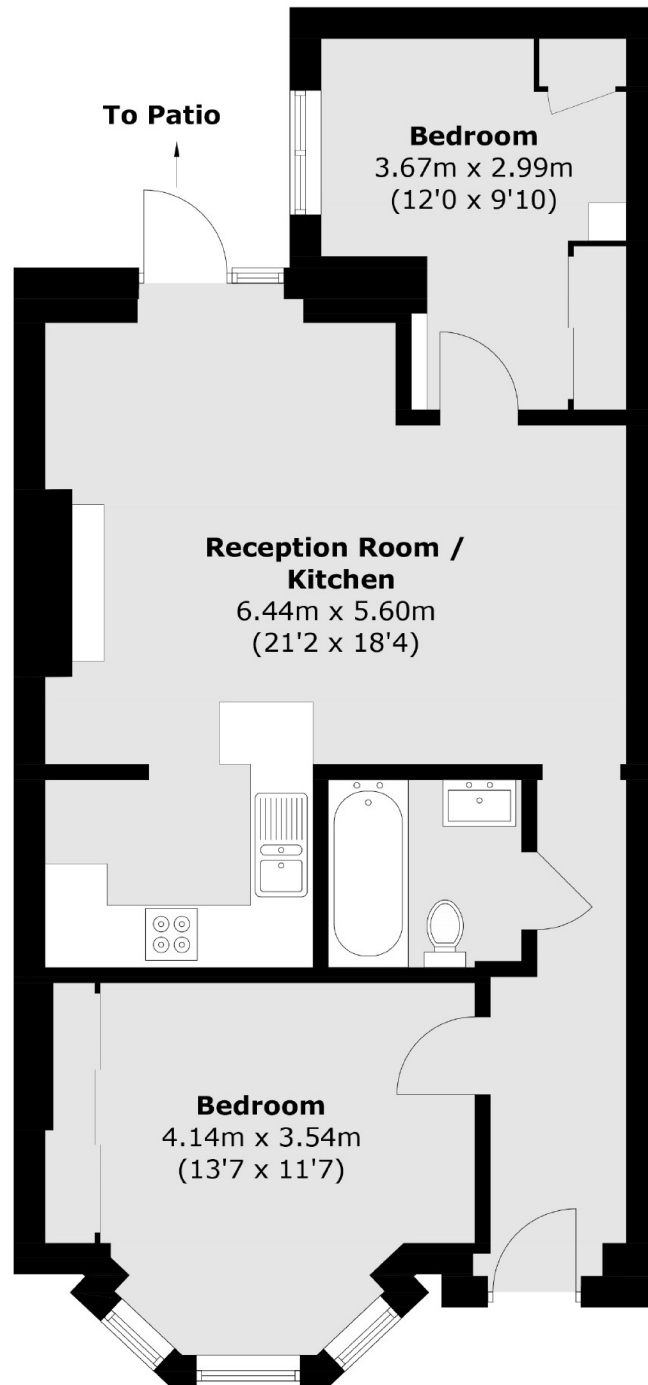
A newly redecorated two bedroom apartment with its own front door, in a Victorian period conversion. The property has an open plan reception room and kitchen, with room to dine and direct access to the private patio. There is new wooden flooring throughout and both bedrooms have built in storage.

Hatherley Grove is a residential road in between Notting Hill and Bayswater and close to the Whiteley's regeneration project. For green spaces, Hyde Park is close by and there are plenty of local amenities and transport links.

Features

- Two Bedrooms
- Own Front Door
- Private Patio Garden
- Victorian Conversion
- Open Plan
- Share of Freehold

Hatherley Grove, London, W2



Total area (approx.): 61.4 sq. m (660.9 sq. ft)