



Oxford Gardens, W10

£475,000

A one bedroom apartment on the first floor of a well maintained Victorian conversion. The property has a dual aspect, open plan reception with a fitted kitchen with plenty of space to dine, high ceilings and solid wood flooring. The large bedroom has custom built in storage and leads on to contemporary bathroom.

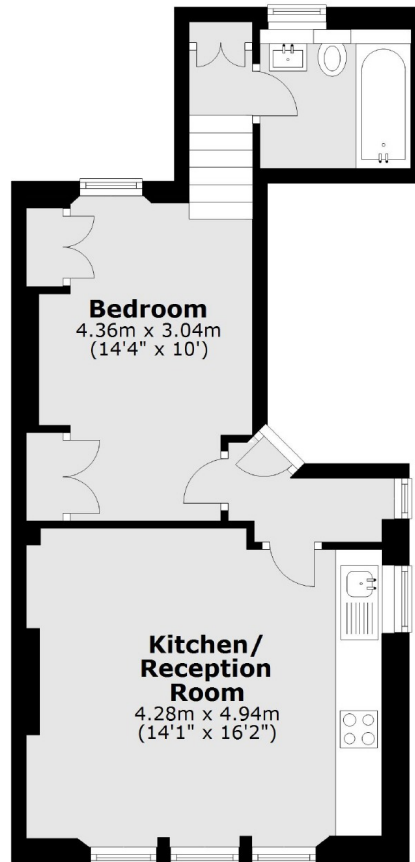
Oxford Gardens is a tree lined street on a sought after residential road in prime W10 within close proximity to Ladbroke Grove, Portobello Road and Ladbroke Grove underground station.

Features

- Offers in Excess of £500,000
- Dual Aspect Reception
- High Ceilings
- Solid Wood Flooring
- Open Plan
- Low Service Charge

Oxford Gardens, London, W10

First Floor



Total area: approx. 42.6 sq. metres (458.3 sq. feet)