



Russell Road, W14

£695,000

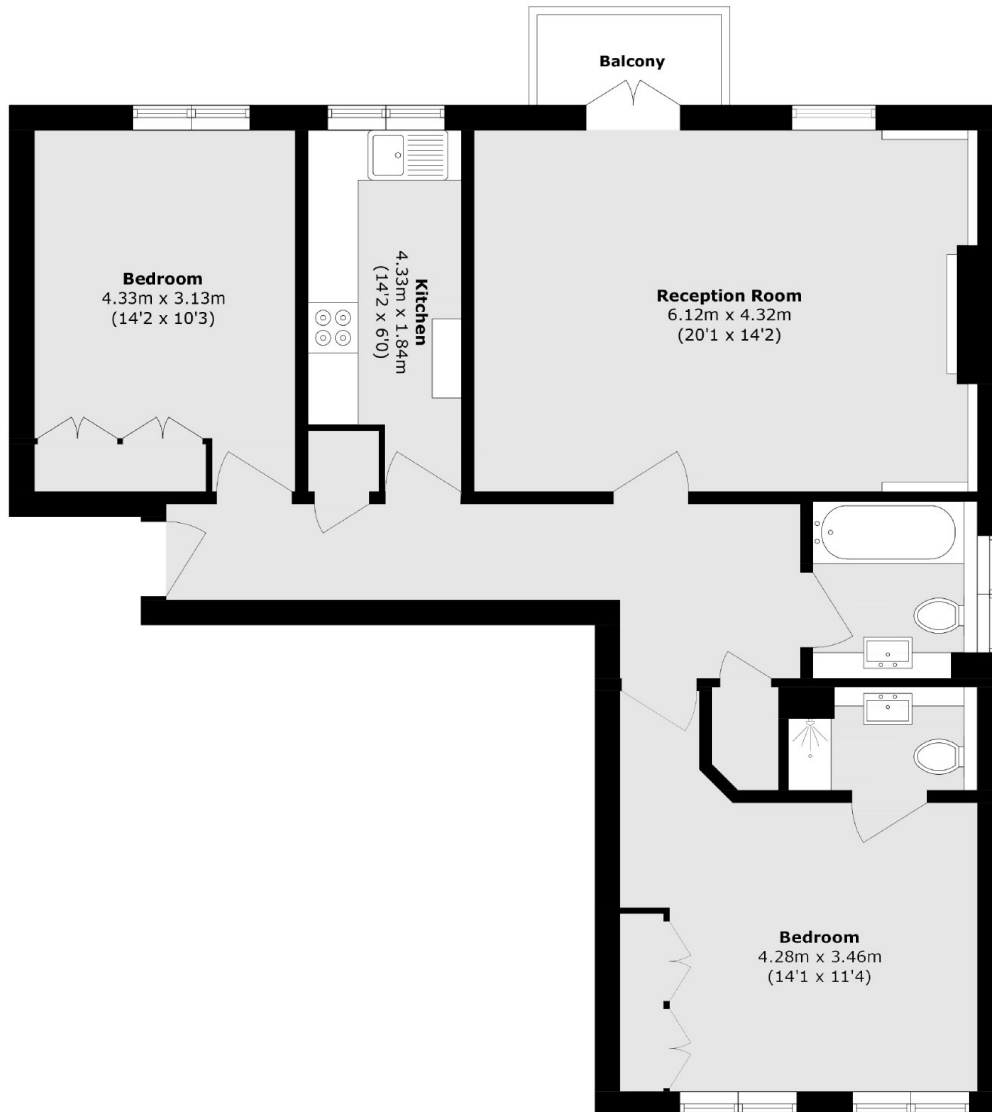
A two double bedroom, two bathroom (one en suite) apartment on the second floor of a modern purpose built building, with a lift, day porter and communal terrace. With a separate reception room and kitchen and underground parking, this is an ideal home for a first time buyer or anyone seeking security and a convenient location.

Russell Road is conveniently located just off Kensington High Street, close to the Olympia regeneration project and with plenty of local shops, restaurants and transport links to choose from.

Features

- Two Bedrooms
- Two Bathrooms
- Separate Kitchen
- Lift
- Communal Terrace
- Close to Amenities

Russell Road, London, W14



Total area (approx.): 86.7 sq. m (933.2 sq. ft)

Balcony area (approx.): 2.3 sq. m (24.7 sq. ft)

Dexters

Westbourne Grove
120 Westbourne Grove
London
W11 2RR
Sales
020 7313 3600

Energy Rating: D. We aim to make our particulars both accurate and reliable. However they are not guaranteed; nor do they form part of an offer or contract. If you require clarification on any points then please contact us, especially if you're traveling some distance to view. Please note that appliances and heating systems have not been tested and therefore no warranties can be given as to their good working order.

 **RICS** | Regulated
Estate Agent
and Letting Agent

[dexters.co.uk](https://www.dexters.co.uk)