



## Hereford Road, W2

£400,000

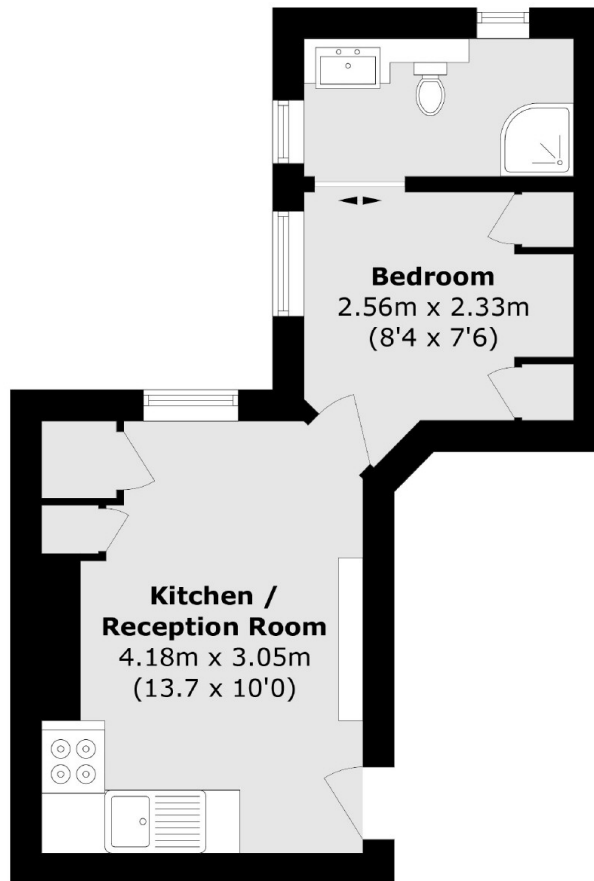
A first floor apartment in a white stucco fronted Victorian conversion. There is a modern kitchen which is open plan to the reception room, a double bedroom with wall mounted storage and a contemporary shower suite.

Hereford Road is ideally located between Westbourne Grove and Notting Hill Gate. Hyde Park is a short walk away as are the transport links of Queensway, Bayswater and Notting Hill Gate.

### Features

One Bedroom  
Open Plan  
White Stucco Fronted  
Second Floor  
Notting Hill

Hereford Road,  
London, W2



Total area (approx.): 22.0 sq. m (236.8 sq. ft)

**Dexters**

Westbourne Grove  
120 Westbourne Grove  
London  
W11 2RR  
Sales  
020 7313 3600

Energy Rating: C. We aim to make our particulars both accurate and reliable. However they are not guaranteed; nor do they form part of an offer or contract. If you require clarification on any points then please contact us, especially if you're traveling some distance to view. Please note that appliances and heating systems have not been tested and therefore no warranties can be given as to their good working order.

 **RICS** | Regulated  
Estate Agent  
and Letting Agent

[dexters.co.uk](https://dexters.co.uk)