



Westbourne Grove, W11

£625,000

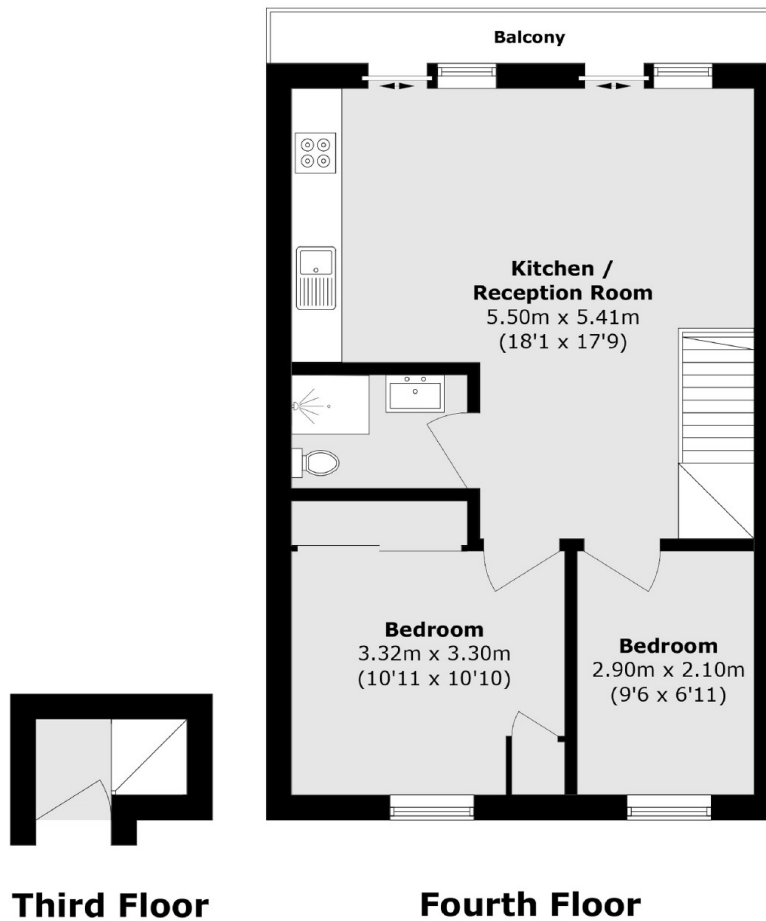
A two double bedroom, top floor flat in a white stucco fronted Victorian conversion. The open plan kitchen and reception room leads to the private South facing balcony. This is an ideal property looking for a sunny flat in a prime location.

Westbourne Grove is a prime location in the heart of Notting Hill, with plenty of chic restaurants and shops to choose from. The green spaces of Hyde Park and transport links in Notting Hill Gate and Westbourne Park are a short walk away.

Features

- Two Bedrooms
- Open Plan
- Private Balcony
- South Facing
- White Stucco Fronted
- Top Floor

Westbourne Grove, London, W11



Total area (approx.): 48.1 sq. m (517.7 sq. ft)

Balcony area (approx.): 3.7 sq. m (39.8 sq. ft)

Dexters

Westbourne Grove
120 Westbourne Grove
London
W11 2RR
Sales
020 7313 3600

Energy Rating: D. We aim to make our particulars both accurate and reliable. However they are not guaranteed; nor do they form part of an offer or contract. If you require clarification on any points then please contact us, especially if you're traveling some distance to view. Please note that appliances and heating systems have not been tested and therefore no warranties can be given as to their good working order.

 **RICS** | Regulated
Estate Agent
and Letting Agent

[dexters.co.uk](https://www.dexters.co.uk)