



Queensway, W2

£450,000

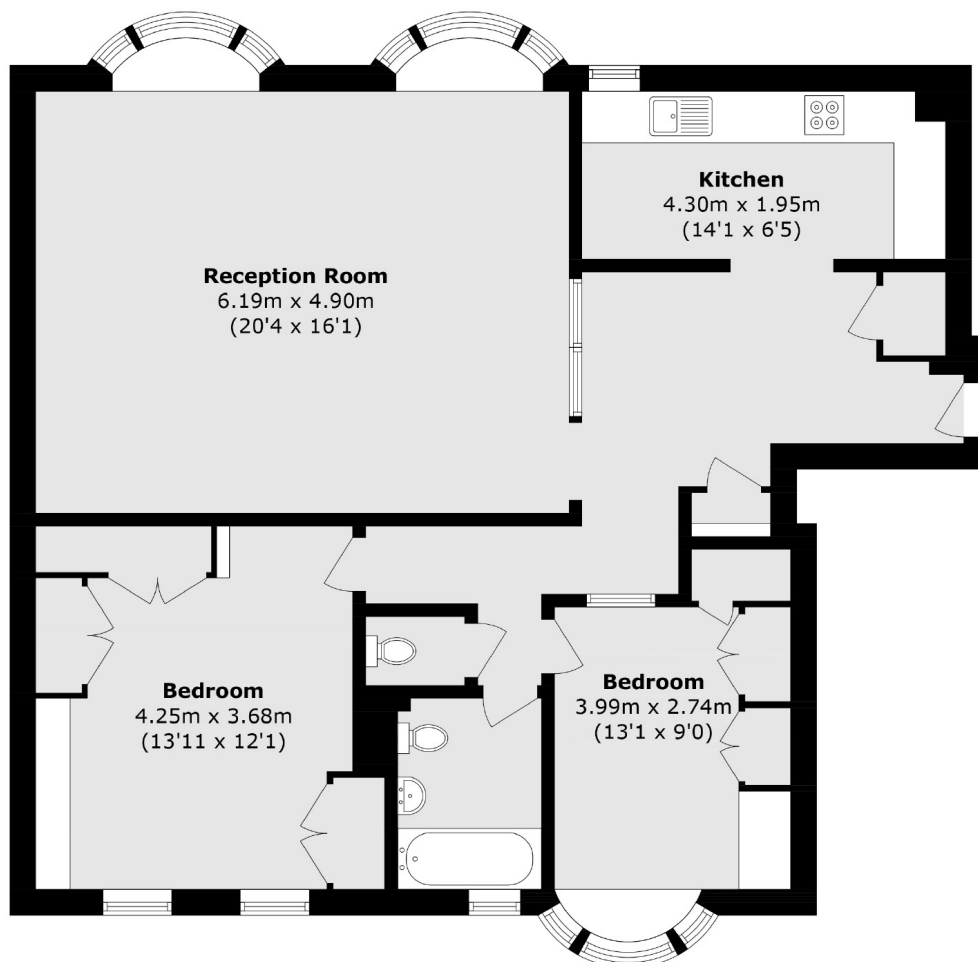
A large two double bedroom apartment, in need of modernisation, set within an elegant red-brick Art Deco building with a lift. The property is over 975 Sq. Ft, and has a double reception room and a separate kitchen. The property comes with 45 years remaining on the lease.

Ralph Court is located on Queensway W2 and is conveniently located near the Whiteley's regeneration project, the green spaces of Hyde Park and plenty of local transport links including Paddington, giving access across London and to Heathrow.

Features

- Two Bedrooms
- Separate Kitchen
- Spacious
- Porter
- Lift
- Bayswater

Queensway, London, W2



Total area (approx.): 90.9 sq. m (978.4 sq. ft)