



## Hatherley Grove, W2

£600,000

A well presented garden flat, with its' own front door, in a white stucco fronted Victorian conversion. With two double bedrooms and a separate kitchen and reception room, this is an ideal first time purchase.

Hatherley Grove is a quiet cul-de-sac, located just moments from the many shops and restaurants of Queensway, Westbourne Grove & Notting Hill Gate along with the transport links of Queensway, Bayswater, Royal Oak and Paddington stations.

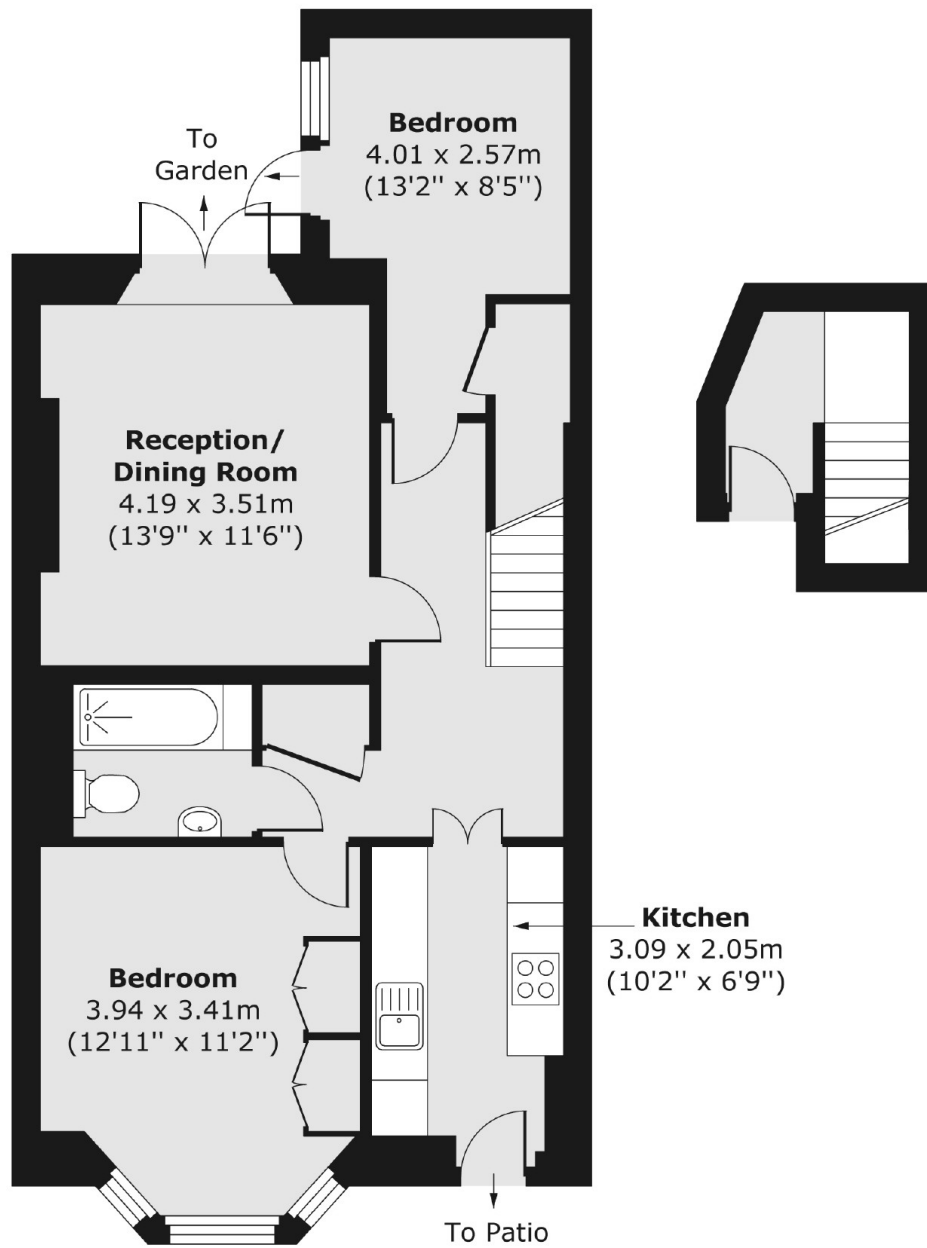
### Features

- OIEO
- Two Double Bedrooms
- Patio Garden
- Victorian Conversion
- Own Front Door
- White Stucco Fronted
- Share of Freehold

# Hatherley Grove, London, W2

Lower Ground Floor

Ground Floor



Total area (approx.) 63.40 sq. m (682 sq. ft)

## Dexters

Westbourne Grove  
120 Westbourne Grove  
London  
W11 2RR  
Sales  
020 7313 3600

Energy Rating: E. We aim to make our particulars both accurate and reliable. However they are not guaranteed; nor do they form part of an offer or contract. If you require clarification on any points then please contact us, especially if you're traveling some distance to view. Please note that appliances and heating systems have not been tested and therefore no warranties can be given as to their good working order.

 **RICS** | Regulated  
Estate Agent  
and Letting Agent

[dexters.co.uk](https://www.dexters.co.uk)