



## Bramley Road, W10

£750,000

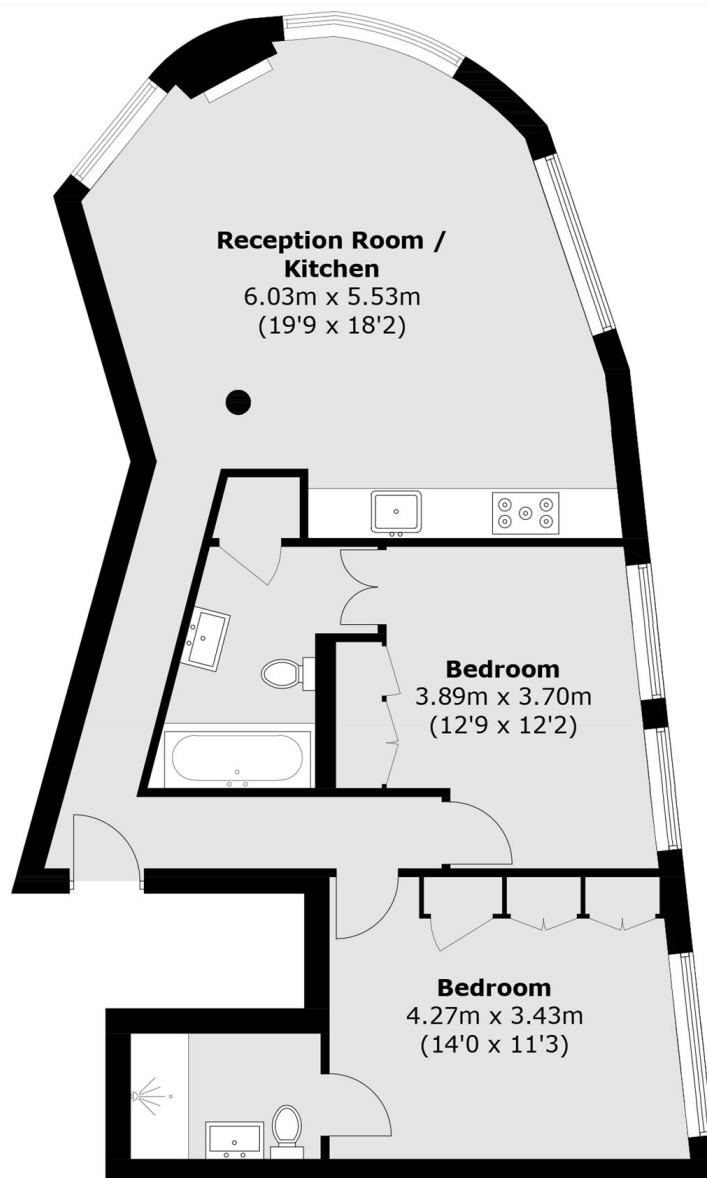
A stylish two double bedroom apartment in a converted pub. The apartment has high ceilings, an open plan reception with a South facing triple aspect, wooden flooring, a modern kitchen and room to dine. Both bedrooms benefit from built-in storage and en suite bathrooms.

Bramley Road is a short walk away from Latimer Road station (0.12 miles) and is close to the shops, restaurants and cafes of Ladbroke Grove, Holland Park and Shepherds Bush. Portobello Market, Westfield Shopping centre and the green spaces of Wormwood Scrubs are similarly close by.

### Features

- Two Double Bedrooms
- Two Bathrooms
- High Ceilings
- Open Plan
- Converted Pub
- Notting Hill

# Bramley Road, London, W10



## First Floor

Total area (approx.): 76.0 sq. m (818.1 sq. ft)

# Dexters

Westbourne Grove  
120 Westbourne Grove  
London  
W11 2RR  
Sales  
020 7313 3600

Energy Rating: D. We aim to make our particulars both accurate and reliable. However they are not guaranteed; nor do they form part of an offer or contract. If you require clarification on any points then please contact us, especially if you're traveling some distance to view. Please note that appliances and heating systems have not been tested and therefore no warranties can be given as to their good working order.

 **RICS** | Regulated  
Estate Agent  
and Letting Agent

[dexters.co.uk](https://www.dexters.co.uk)