



Ledbury Road, W11

£1,350,000

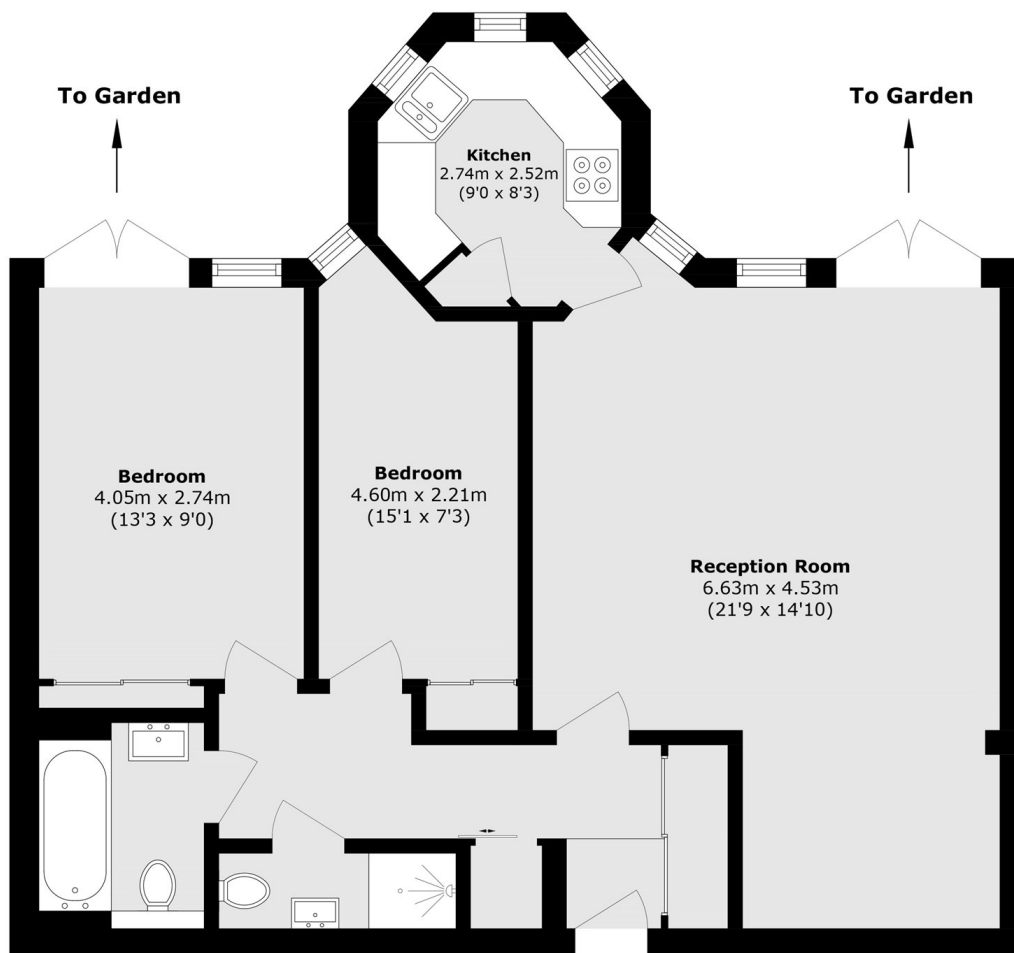
A recently refurbished two double bedroom garden flat. The lateral apartment has a separate high specification kitchen, two stylish bathrooms, built in wardrobes and a spacious reception room with space to dine, leading directly to the private West facing garden, with rear private access.

Conveniently located off Westbourne Grove which has a wide array of chic bars, restaurants and boutiques, as well as short walking distance to Body Works West health club and The Electric Cinema.

Features

- West Facing Garden
- Two Bedrooms
- Two Bathrooms
- Recently Refurbished
- High Specification
- Prime Notting Hill

Ledbury Road, London, W11



Total area (approx.): 72.0 sq. m (775.0 sq. ft)

Dexters

Westbourne Grove
120 Westbourne Grove
London
W11 2RR
Sales
020 7313 3600

Energy Rating: D. We aim to make our particulars both accurate and reliable. However they are not guaranteed; nor do they form part of an offer or contract. If you require clarification on any points then please contact us, especially if you're traveling some distance to view. Please note that appliances and heating systems have not been tested and therefore no warranties can be given as to their good working order.

 **RICS** | Regulated
Estate Agent
and Letting Agent

[dexters.co.uk](https://www.dexters.co.uk)