



Porchester Road, W2

£450,000

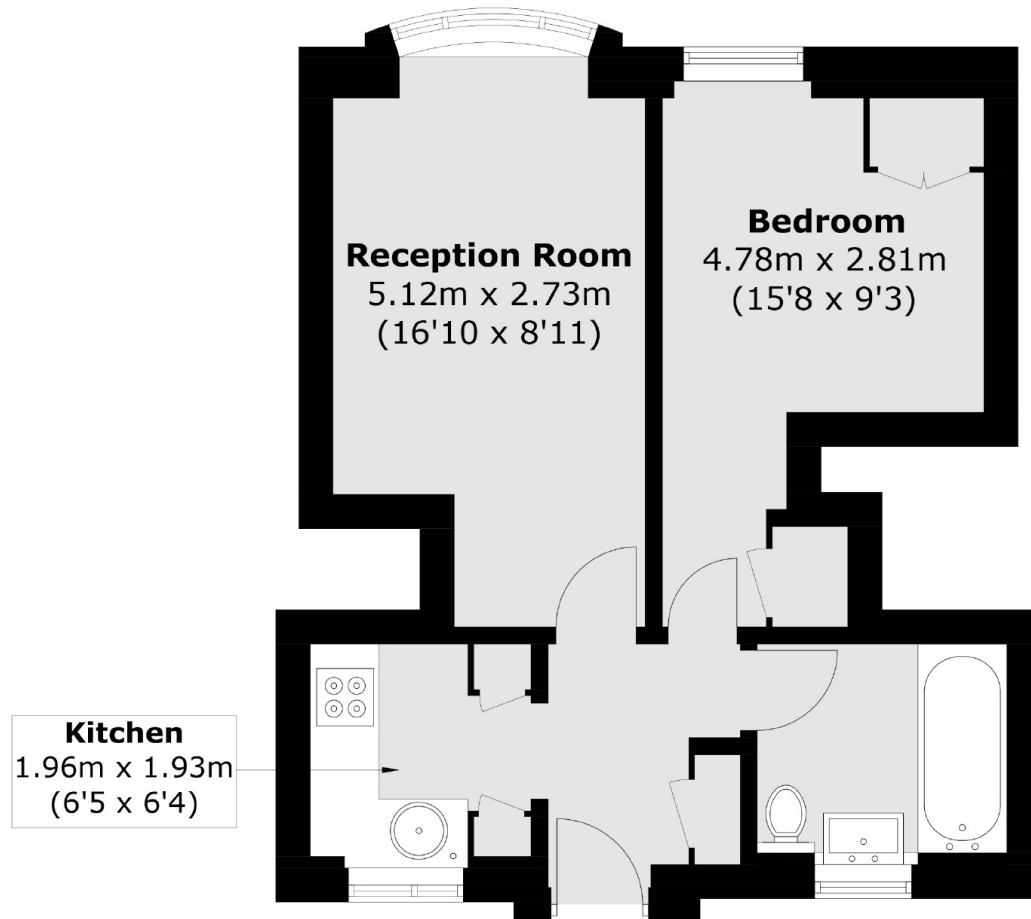
A beautifully presented one bedroom apartment in a purpose built portered mansion block. The property has a spacious reception with room to dine, a separate fitted kitchen, wooden flooring and high ceilings throughout.

Peters Court is moments from the local shops, bars and restaurants along Queensway, the green spaces of Hyde Park and plenty of local transport links.

Features

- One Bedroom
- Separate Kitchen
- Wooden Flooring
- Lift
- Porter
- Close To Amenities

Porchester Road, London, W2



Total area (approx.): 36.1 sq. m (388.6 sq. ft)

Dexters

Westbourne Grove
120 Westbourne Grove
London
W11 2RR
Sales
020 7313 3600

Energy Rating: C. We aim to make our particulars both accurate and reliable. However they are not guaranteed; nor do they form part of an offer or contract. If you require clarification on any points then please contact us, especially if you're traveling some distance to view. Please note that appliances and heating systems have not been tested and therefore no warranties can be given as to their good working order.

 **RICS** | Regulated
Estate Agent
and Letting Agent

[dexters.co.uk](https://www.dexters.co.uk)