



Vicarage Gardens, W8

£4,500,000

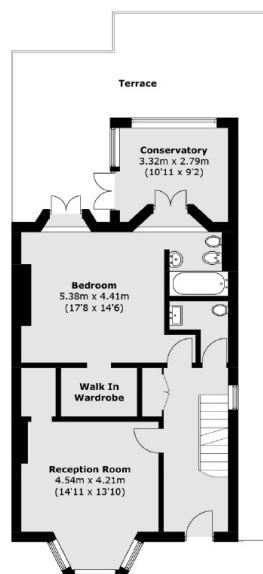
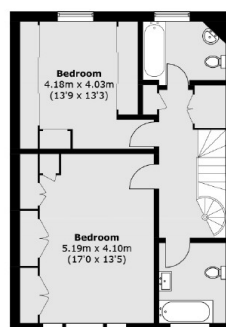
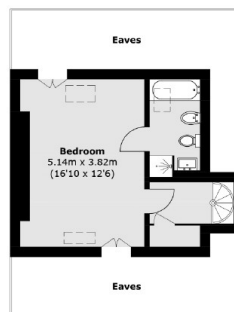
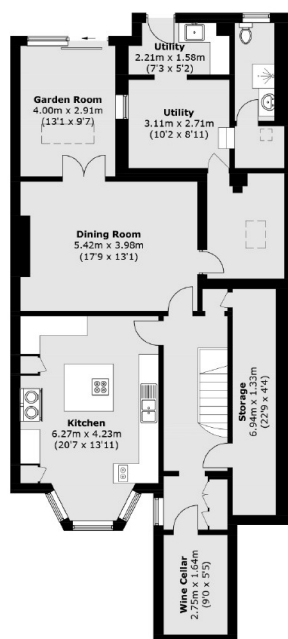
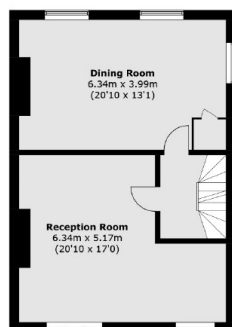
A wide, white stucco fronted family home available for the first time in over forty years. Measuring just under 4,000 Sq.Ft, with three reception rooms, five bedrooms, four bathrooms, terrace, garden and off-street parking and a flexible space ideal for refurbishment and reconfiguring (subject to the usual consents).

Vicarage Gardens is a prime residential road in Kensington, in between the green spaces of Kensington Gardens and Holland Park, a short walk to the shops restaurants and boutiques on Kensington High Street and plenty of transport links nearby.

Features

- Freehold House
- Off-Street Parking
- Garden and Terrace
- Refurbishment Potential
- Five Bedrooms
- Kensington

Vicarage Gardens, London, W8



Total area (approx.): 341.0 sq. m (3,670.4 sq. ft)
(Excluding Eaves)
Terrace: 43.5 sq. m (468.2 sq. ft)

Dexters

Westbourne Grove
120 Westbourne Grove
London
W11 2RR
Sales
020 7313 3600

Energy Rating: E. We aim to make our particulars both accurate and reliable. However they are not guaranteed; nor do they form part of an offer or contract. If you require clarification on any points then please contact us, especially if you're traveling some distance to view. Please note that appliances and heating systems have not been tested and therefore no warranties can be given as to their good working order.

RICS Regulated
Estate Agent
and Letting Agent

dexters.co.uk