



Bevington Road, W10

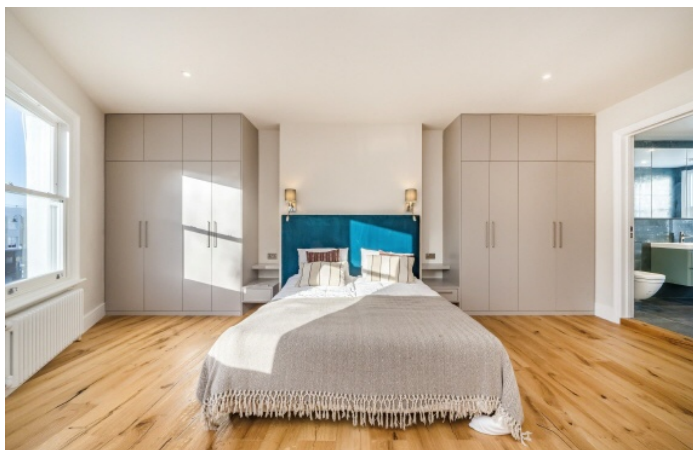
£1,850,000

An immaculate three bedroom apartment situated over three floors and benefitting from a spacious reception room and two private outdoor areas in the heart of Notting Hill.

Bevington Road is ideally located just off Goldborne Road and a short distance from the infamous Portobello Road offering great access to trendy shops and restaurants.

Features

- Three Bedrooms
- Two Bathrooms
- Private Roof Terrace
- Newly Refurbished
- Split Level
- Own Front Door



Bevington Road, W10

You enter the apartment on the ground floor where you benefit from your own front door and a wide hallway. On the first floor there is a large reception space with an open plan kitchen area which benefits from fully integrated appliances and a great entertaining space.

There are two further bedrooms both of which are benefitting from fitted storage. There is a large bathroom on the same floor with a shower. On the top floor the master suite with further storage and an immaculate bathroom with a stand alone bath.



Bevington Road, London, W10



Total area (approx.): 140.17 sq.m (1509 sq. ft)
Balcony / Roof Terrace: 58.6 sq. m (630.8 sq. ft)