



## Cleveland Gardens, W2

### £900,000

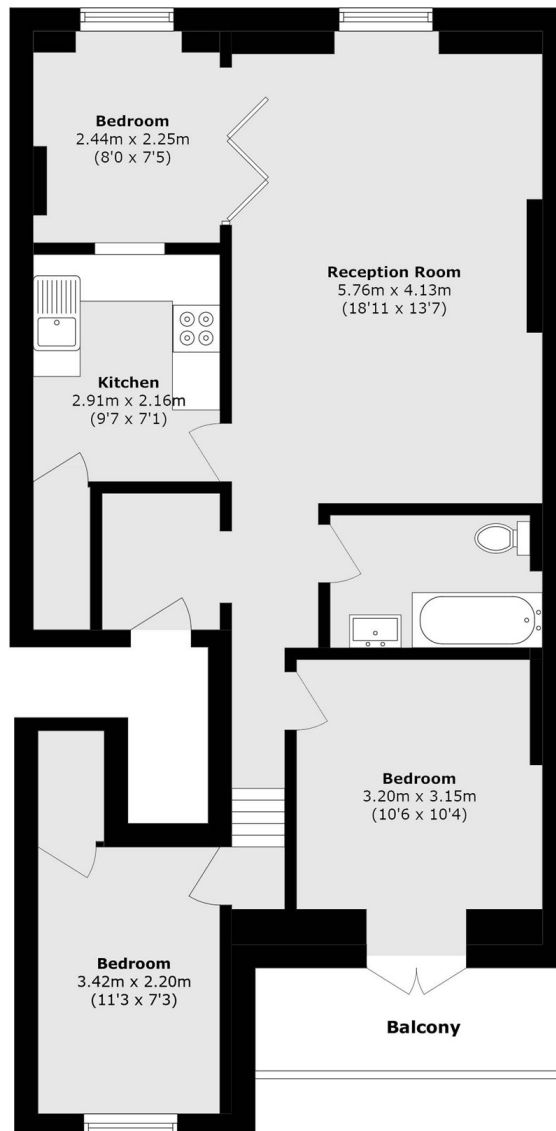
A second floor apartment (with lift) in a white stucco fronted building overlooking (and with access to) communal gardens. With two / three bedrooms, a separate kitchen and a private balcony, this is an ideal home for anyone looking for a convenient location.

Cleveland Square and Gardens is a sought after address, centrally located for all underground stations between Hyde Park, Bayswater, Lancaster Gate and Paddington, including Paddington mainline (Network rail and Heathrow Express). The green spaces of Kensington Gardens and Hyde Park are only a short walk away.

### Features

- Two / Three Bedrooms
- Lift
- Balcony
- Communal Gardens
- White Stucco Fronted
- Paddington
- Hyde Park

# Cleveland Gardens, London, W2



Total area (approx.): 76.0 sq. m (818.0 sq. ft)

Balcony area (approx.): 5.6 sq. m (60.2 sq. ft)