



Holland Park Avenue, W11  
£1,000,000

**Dexters**



## Holland Park Avenue, W11

An exceptional 892 Square Foot one bedroom apartment with a separate study located on a raised ground floor in Holland Park.

Set far back from the road, the property offers exceptional living space. The reception room has high ceilings and boasts original features and a bay window with plenty of room to dine and entertain.

There is a separate kitchen with a floor to ceiling window allowing plenty of natural light in. The bedroom with built in storage leads onto a private terrace and there is also a separate study and modern bathroom.

Holland Park Avenue is perfectly located between the green spaces of both Holland Park and Hyde Park whilst offering close proximity to Holland Park Station and Notting Hill Gate Station.

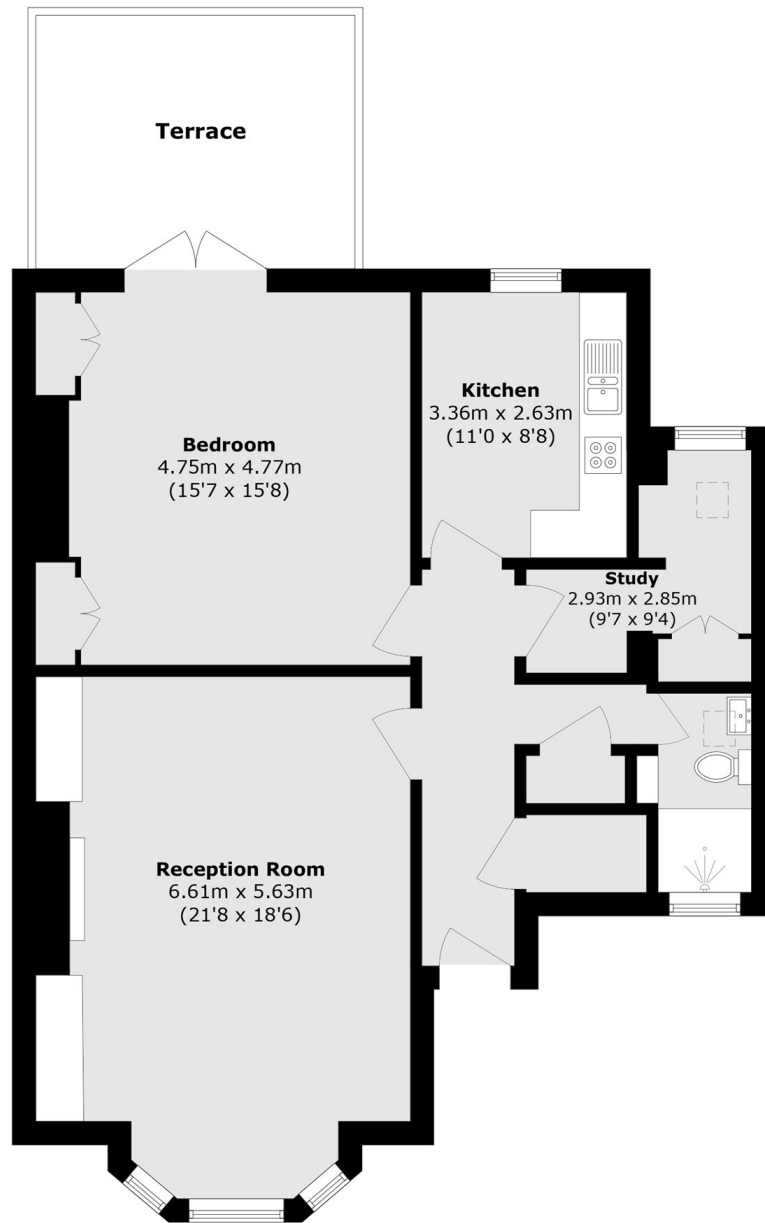
### Features

- Raised Ground Floor
- Terrace
- One Double Bedroom
- Study
- South Facing Reception
- High Ceilings





# Holland Park Avenue, London, W11



Total area (approx.): 82.9 sq. m (892.3 sq. ft)

Terrace area (approx.): 12.9 sq. m (138.8 sq. ft)

## Dexters

Westbourne Grove  
120 Westbourne Grove  
London  
W11 2RR  
Sales  
020 7313 3600

Energy Rating: C. We aim to make our particulars both accurate and reliable. However they are not guaranteed; nor do they form part of an offer or contract. If you require clarification on any points then please contact us, especially if you're traveling some distance to view. Please note that appliances and heating systems have not been tested and therefore no warranties can be given as to their good working order.

 **RICS** | Regulated  
Estate Agent  
and Letting Agent

[dexters.co.uk](https://www.dexters.co.uk)