



Ladbroke Grove, W11

£775,000

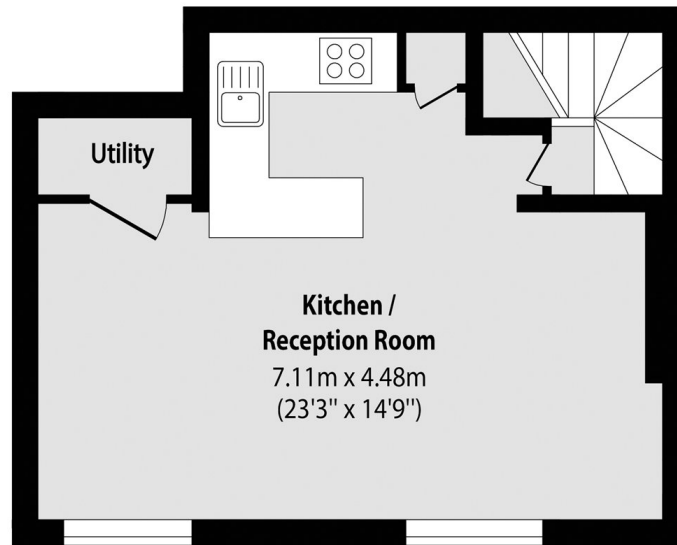
This stylish two-bedroom apartment spans the third and fourth floors of a Victorian conversion. Featuring an open-plan kitchen/reception, a contemporary bathroom, and expansive windows, it offers bright, modern living in a period setting.

Tucked just off Blenheim Crescent, moments from vibrant Notting Hill, this home is surrounded by cafés, boutiques, and the famous Portobello Road Market, with excellent transport links close at hand.

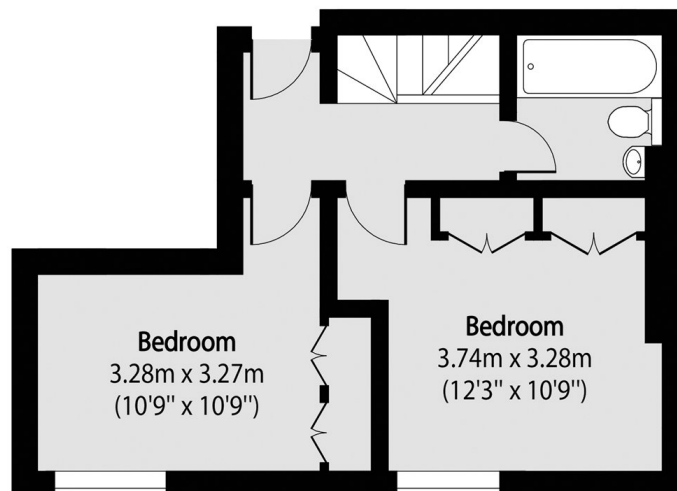
Features

- Spacious Reception
- Modern Open Plan Kitchen
- Two Versatile Bedrooms
- Contemporary Bathroom
- Prime Notting Hill Location

Ladbroke Grove, London, W11



Fourth Floor



Third Floor

Total area (approx): 87.72 sq m (944 sq. ft)