

Russell Road, W14

£780,000

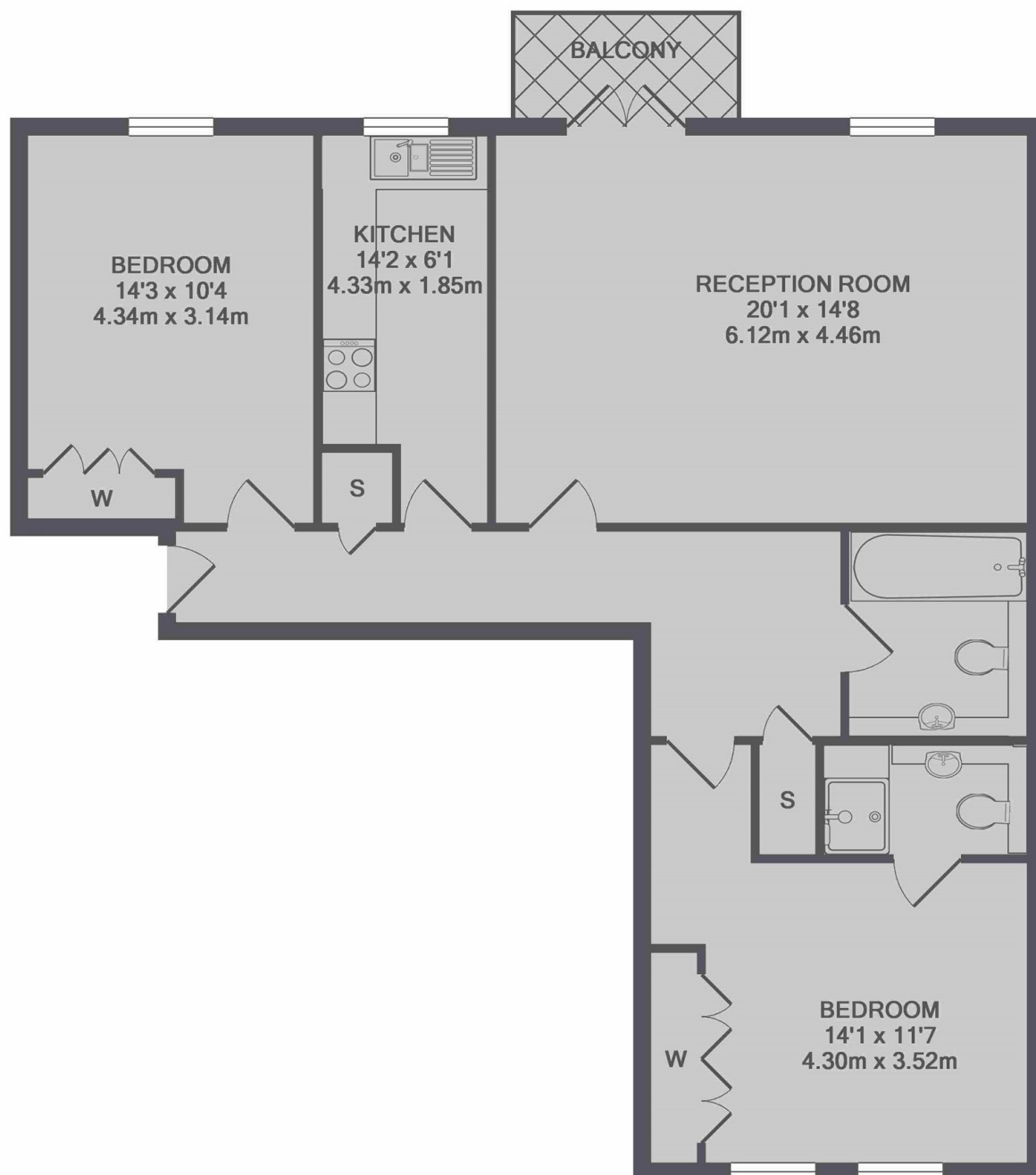
A spacious two double bedroom, two bathroom apartment in a purpose built building with a lift and underground parking. With room to dine and a Juliette balcony in the reception room, this is an ideal purchase for anyone that loves entertaining.

Russell Road is ideally located for all the shops restaurants and bars of Kensington High Street and offers easy access to Kensington Olympia Underground Station.

Features

- Two Double Bedrooms
- Two Bathrooms
- Private Parking
- Private Balcony
- Communal Garden
- Lift

Russell Road, London, W14



TOTAL APPROX. FLOOR AREA 952 SQ.FT. (88.4 SQ.M.)

Dexters

Westbourne Grove
120 Westbourne Grove
London
W11 2RR
Sales
020 7313 3600

Energy Rating: C. We aim to make our particulars both accurate and reliable. However they are not guaranteed; nor do they form part of an offer or contract. If you require clarification on any points then please contact us, especially if you're traveling some distance to view. Please note that appliances and heating systems have not been tested and therefore no warranties can be given as to their good working order.

 **RICS** | Regulated
Estate Agent
and Letting Agent

[dexters.co.uk](https://www.dexters.co.uk)