

## Kensington Gardens Square, W2

£530,000

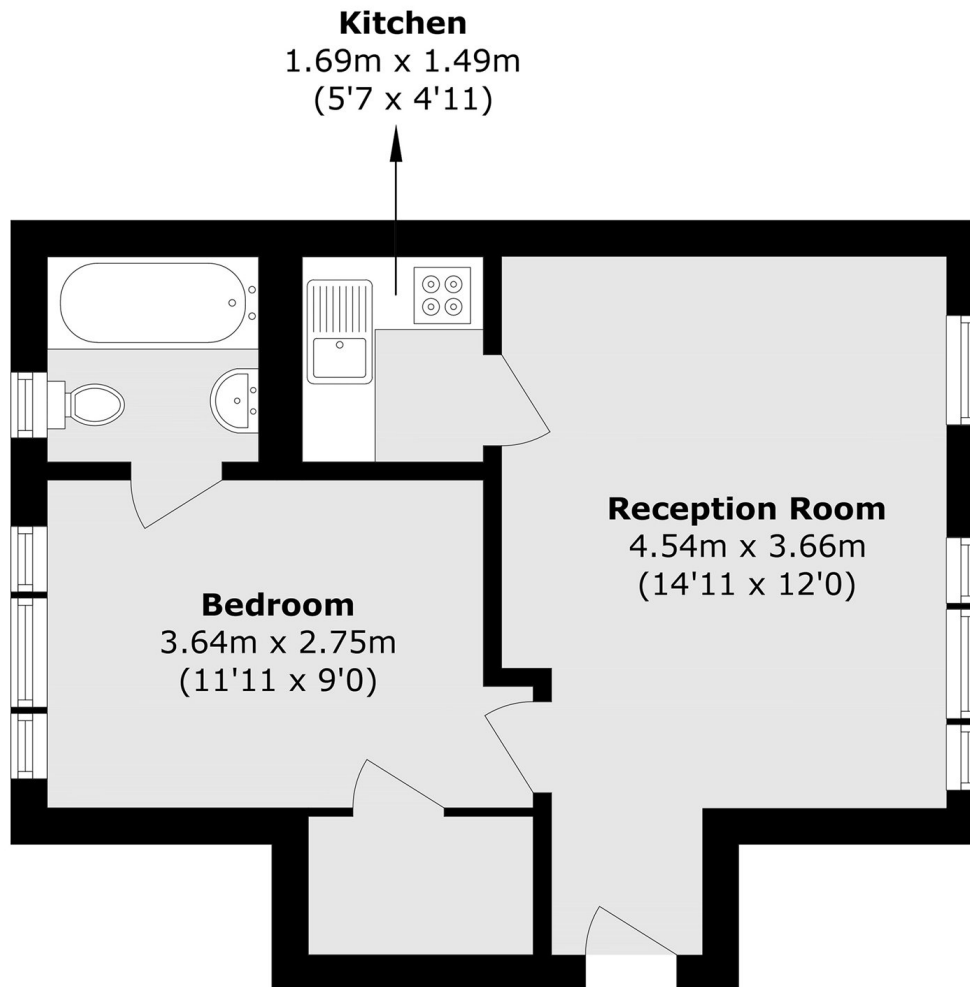
A spacious and bright third floor flat (with lift) in a white stucco fronted building overlooking a garden square. There's a separate kitchen, the reception room has space to dine and the bedroom has good closet space.

Kensington Gardens Square is conveniently located, close to prime Notting Hill and the regeneration of Bayswater, as well as the green spaces of Hyde Park and plenty of local restaurants, pubs and shops.

### Features

- One Double Bedroom
- Lift
- Share of Freehold
- White Stucco Fronted
- Garden Square
- Notting Hill and Bayswater
- Close To Amenities

# Kensington Gardens Square, London, W2



Total area (approx.): 37.5 sq. m (403.7 sq. ft)