



## Addison Road, W14

### £1,895,000

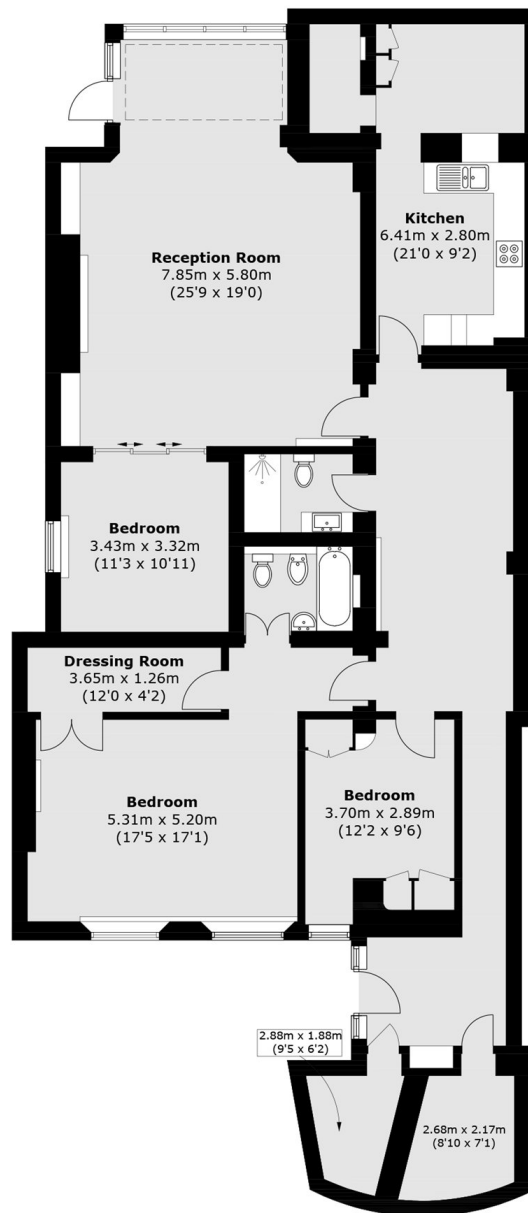
A spacious and well laid out three bedroom apartment located in a prime tree-lined residential street. The apartment features an impressive reception room with space to entertain that leads onto a private garden, a separate kitchen and two bathrooms. The property boasts high ceilings throughout whilst the principal bedroom features an en suite bathroom and walk-in wardrobe. Service Charge is on an ADHOC basis.

The property is ideally situated on one of the most prestigious streets in Holland Park with easy access to Westfield shopping centre Holland Park Station and the manicured green spaces of Holland Park.

### Features

- Three Double Bedrooms
- Two Bathrooms
- Garden
- High Ceilings
- Own Entrance
- Holland Park

# Addison Road, London, W14



**Lower Ground Floor**

Total area (approx.): 169.6 sq. m (1,825.5 sq. ft)