

Stanhope Terrace
Hyde Park, W2

Dexters



About the property

A stylish and recently refurbished apartment in a white stucco fronted building with communal gardens, porters and off-street parking, opposite Hyde Park.

Entered through well-maintained communal gardens and in through its own front door into an open plan reception room. With room to dine, Herringbone flooring, a fireplace, recessed lighting and a high specification feature kitchen, this space is ideal for those that love entertaining or quiet nights in.

To the rear there are the two bedrooms, the principal has built-in storage and an en suite bathroom, as well as a further bathroom, each beautifully presented.

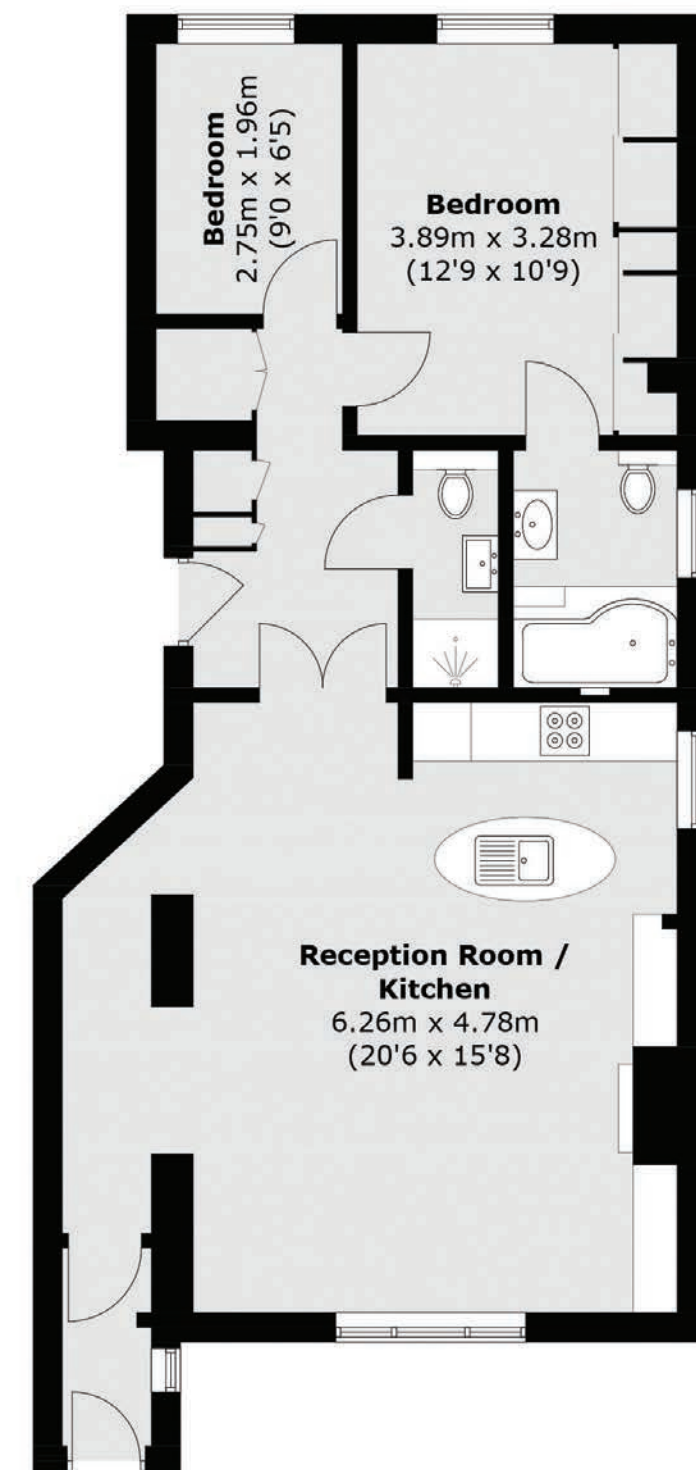
Stanhope Terrace is ideally located opposite Hyde Park and is near to Paddington Station, Lancaster Gate and Marble Arch transport links and Connaught village for its local shops, boutiques and restaurants.

Key features

- Share of Freehold
- Communal Gardens
- Porter
- Open Plan
- Recently Refurbished
- Hyde Park







Ground Floor

TOTAL APPROX. FLOOR AREA 792.2 SQ. FT (73.6 SQ. M)

Energy Rating: D. We aim to make our particulars both accurate and reliable. However they are not guaranteed; nor do they form part of an offer or contract. If you require clarification on any points then please contact us, especially if you're traveling some distance to view. Please note that appliances and heating systems have not been tested and therefore no warranties can be given as to their good working order.



Dexters Westbourne Grove
120 Westbourne Grove
London, W11 2RR
020 7313 3600

Dexters