



Campden Grove, W8

£1,100,000

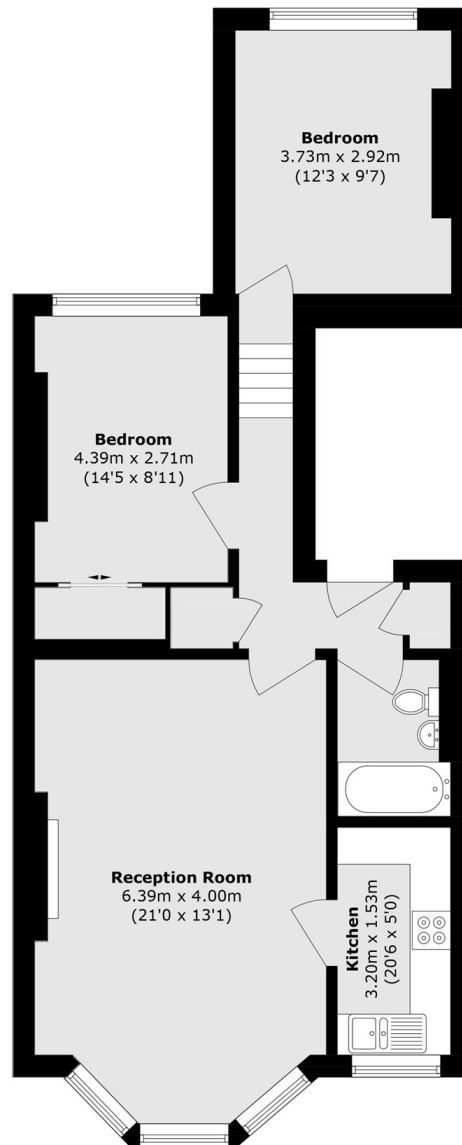
A two double bedroom apartment on the first floor of a Victorian conversion. The reception room has high ceilings, wooden floors, large windows and room to dine. There is a separate fitted kitchen and recently refurbished bathroom, overall a fabulous home for anyone looking for period features in a prime location.

Walking distance from both Notting Hill and High Street Kensington, great for commuting (via the Central, District and Circle lines) and taking advantage of all of the restaurants, shops and bars the areas has to offer.

Features

- First Floor Flat
- Victorian Conversion
- High Ceilings
- Two Double Bedrooms
- Separate Kitchen
- Kensington High Street

Campden Grove, London, W8



First Floor

Total area (approx.): 61.6 sq. m (663.0 sq. ft)

Dexters

Westbourne Grove
120 Westbourne Grove
London
W11 2RR
Sales
020 7313 3600

Energy Rating: E. We aim to make our particulars both accurate and reliable. However they are not guaranteed; nor do they form part of an offer or contract. If you require clarification on any points then please contact us, especially if you're traveling some distance to view. Please note that appliances and heating systems have not been tested and therefore no warranties can be given as to their good working order.

 **RICS** | Regulated
Estate Agent
and Letting Agent

[dexters.co.uk](https://www.dexters.co.uk)