



## Lorne Gardens, W11

£650,000

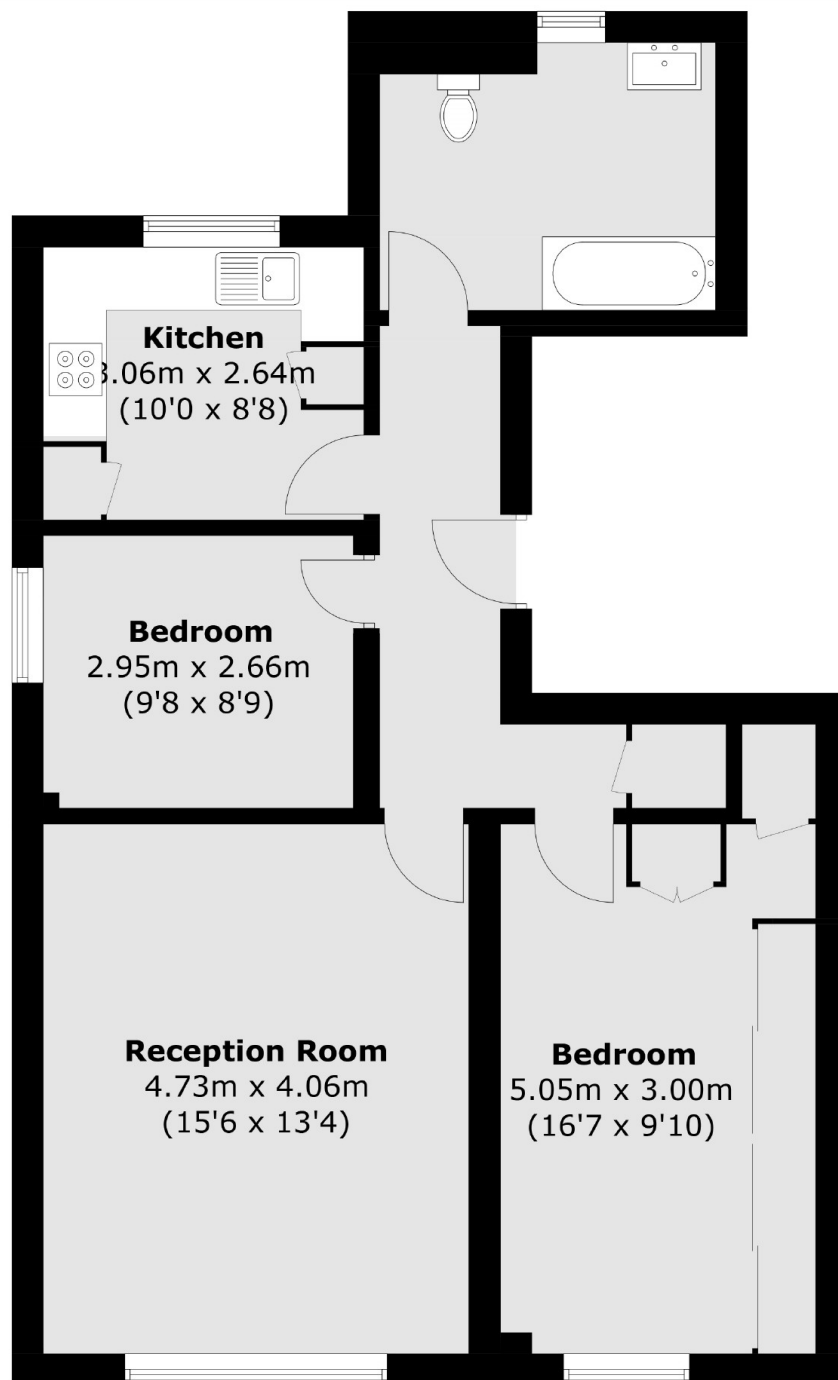
A two bedroom apartment in a gated modern block with porter and parking space. The property has a spacious reception with room to dine, a modern separate kitchen and wooden flooring throughout.

Cameret Court is ideally located for the shops, bars and restaurants of Holland Park, with both Westfield Shopping Centre and Kensington High Street nearby. There are also good transport links close by at Holland Park and Shepherds Bush underground stations.

### Features

- Two Double Bedrooms
- Spacious Dining/Reception
- Separate Kitchen
- Gated Portered Block
- Share Of Freehold
- Allocated Parking Space

# Lorne Gardens, London, W11



Total area (approx.): 71.5 sq. m (769.6 sq. ft)

## Dexters

Westbourne Grove  
120 Westbourne Grove  
London  
W11 2RR  
Sales  
020 7313 3600

Energy Rating: C. We aim to make our particulars both accurate and reliable. However they are not guaranteed; nor do they form part of an offer or contract. If you require clarification on any points then please contact us, especially if you're traveling some distance to view. Please note that appliances and heating systems have not been tested and therefore no warranties can be given as to their good working order.

 **RICS** | Regulated  
Estate Agent  
and Letting Agent

[dexters.co.uk](https://www.dexters.co.uk)