

Hervey Close, N3

£3,750 Per calendar month




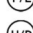


This delightful four-bedroom home is finished to an exceptional standard and offers bright, well-proportioned living spaces throughout. The ground floor features a spacious sitting room with a large bay window that floods the space with natural light, leading to a dining area with views over the garden and doors to a stylish, modern kitchen.

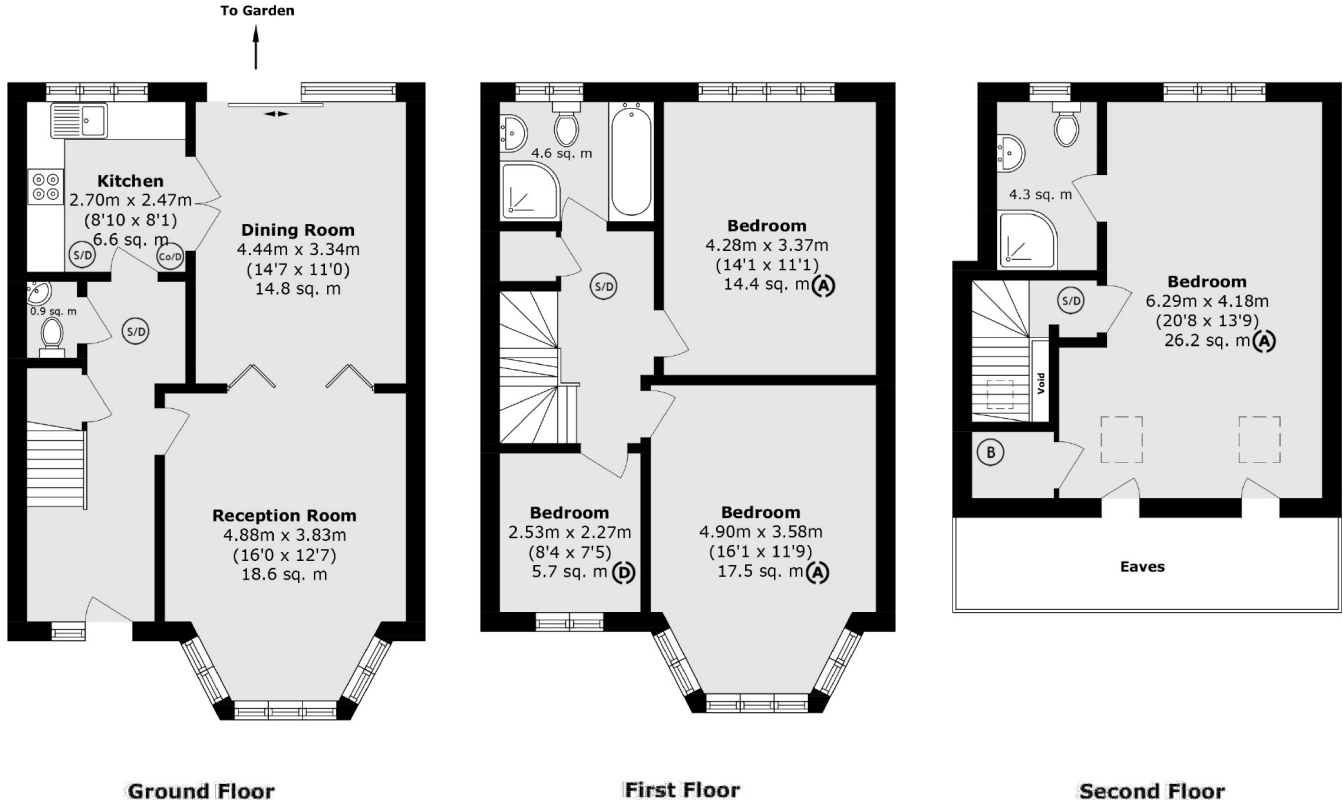
The property is conveniently located within easy reach of Finchley Central station, offering excellent transport links across London. The surrounding area provides a wealth of local amenities, including shops, cafés, restaurants, and parks, ensuring a vibrant and convenient lifestyle.

Features

- Four Bedrooms
- Two Receptions
- Two Bathrooms
- Wooden Flooring
- Garden
- Close to station

Hervey Close, London, N3

-  S/D Smoke Detector
-  F/B Fire Blanket
-  Fire Exit
-  F/E Fire Extinguisher
-  H/D Heat Detector
-  B Boiler



Total area (approx.): 137.7 sq. m (1482.2 sq. ft)
(Excl. (Excluding) Eaves)

National Guidelines (may differ depending on Local Authority).

- E) 4.6 square meters > = no one**
- D) 4.6 - 6.5 square meters = 1/2 person (Child up to 10 years)**
- C) 6.5 - 8.4 square meters = 1 person**
- B) 8.4 - 10.2 square meters = 1 1/2 people**
- A) 10.2 meters < = 2 people**